



RAJNIVI



CONTENTS

FENCING

4-5	Welcome
6-7	Does Your Fence Flex?
8-9	525 Plus Flex Fence®
12-13	425 Flex Fence®
14-15	Per4mance Flex Fence®
16	Flex Fence® Hardware
17	Bracing
18	Wood Posts
19	RAMM Paint
20	Flex Fence® Installation Tips
21	Flex Fence® Round Pen
22	Combination Fence
24-25	Electric Fence 101
26	Raceline Coated Wire
27	Shockline Coated Wire
30	Raceline/Shockline Hardware
31	Raceline/Shockline Installation Tips
32-33	Pro-Tek Electric Tape
36-37	Pro-Tek Braided Electric
36-37	ElectroBraid™
38	Fence Chargers
39	Fence Testers
40	Fence Grounding
41	Fence Tensioners & Connectors
42	Fence Insulators
43	Tools & Accessories
44	Gate Accessories
46	Mesh Fencing
47	PVC Fence

STALLS

49	Stalls 101
50-51	The Derby (Pro-Line Kit)
52-53	The Essex (Standard Kit)
54	Grillwork and Partition Kits Part 1
55	Finish Options
56-57	The Cambridge
58-59	The Dublin (Portable)
60-61	The Oxford (Welded)
62	Grillwork and Partition Kits Part 2
63	Stall Window Grills
66-67	The Shetland (Tuscany Kit)
70-73	Stall Hardware

FARM & BARN

75	Dutch & Bale Doors
76	Rubber Pavers
77	Stall Mats
78	ThuroBed Mattress
79	Fans & Ventilation
79	LED Lighting
80	Mud Management
80	Stall Grid
81	Drinking Post Waterer
81	Auto Fly Spray System
82	Check Us Out
83	Company Information



WELCOME

...to our family business! We started RAMM because of our need to find horse products that are not only stronger, but longer lasting. In our quest to provide significantly better products to our customers, we have been privileged to have carried every high tensile coated polymer fence on the market. Then, we listened to our customers requests for easier installations, longer warranties, and streamlined hardware. After years of R&D, we manufacture Flex Fence® that is a safer, stronger alternative made with superior quality.

Our RAMM stall division started the same way. We carried a number of brands and decided that we needed to manufacture stalls with closer bar spacing, quality control, and strength. Since our stall manufacturing building is on site, we can see everything our craftsman do, from beginning to end.

Being a leader in the industry for over 30 years, we did the research for you - for today. We are the only company that manufactures both fencing and stalls and offer the best products available. Our one-stop shop includes everything you need for your pastures, barn and farm!



Debbie Disbrow
Founder, CEO, President

THE STRENGTH YOU NEED & THE QUALITY YOU WANT

RAMM helped make my dream farm a reality! In addition to their unbelievable customer service and reasonable pricing, I decided to chose RAMM stalls because of their resistance to rust, sleek look, and the horse-proof latches!

By Horsemen, For Horsemen

The RAMM family and team are lifelong equestrians. We are very passionate about helping you create practical, safer and more secure solutions for your horses.

RAMM can look over your layout and offer ideas to help you accomplish your priorities. Also, we can show you how to guard against high traffic areas in pastures and the barn, and how to save without sacrificing strength and quality.

When it comes to explaining the installation of your products, our RAMM team is here to answer any and all of your questions. You will receive support from the beginning to the end of your project.

The level of personalized service that RAMM offers before, during and after a sale sets us apart. Unlike big box stores, we spend one on one time with each client during planning stages and throughout your project.



Planning Your Fence...

- 8', 10' or 12' post spacing is best for horses. This will give more stability between the rails.
- Decide if you want your rail to the inside of your posts. This offers a stronger fence for horses.
- Keep in mind that with average sized horses, you don't want more than 9"-11" between your rails.
- Using four 525 Plus Flex Fence® rails or combination fencing gives your horses better visibility and peace of mind.
- Most horses don't like to chew on Flex Rail. However, if horses abuse the rail, we **recommend** adding electric fence.
- Placing gates in corners or at the end of a run saves on posts, concrete, & hardware.
- All end, corner, gate posts or any post out of a straight line need to be braced and concreted with any tensioned fence.

Your warranty with your Flex Fence® rails covers all manufacturers defects or weathering. This includes cracking, peeling, chipping and discoloration. Abuse to the fence is not covered. **We recommend the use of electric, especially in high traffic areas.**

*LOOKING FOR MORE TIPS ON
PLANNING YOUR FENCE?
CALL 800.853.1611 & REQUEST OUR
FARM & BARN PLANNING GUIDE!*

Does Your Fence Flex?

Our Flex Fence® has survived some of the greatest storms and severe weather. Trees have fallen on this fence, putting more pressure on the rail than any farm animal would. The rail will flex 6-8" on impact. In most cases, the trees were cut off the fence

and the rails have sprung back. With superior break strength and flexibility, the force of an impact radiates down the entire line of fencing dissipating that force. No traditional wood fence can offer you that kind of strength or forgiveness.





Thank You RAMM Fence

Thank you so much for making a fence that withstood Hurricane Matthew and the trees that fell on it. My 4.25" fencing held the trees and snapped back into place when I was able to get the trees cut. I am telling EVERYONE about it. Words cannot express the money I have saved this weekend with having installed your fencing.

525 Plus Flex Fence®

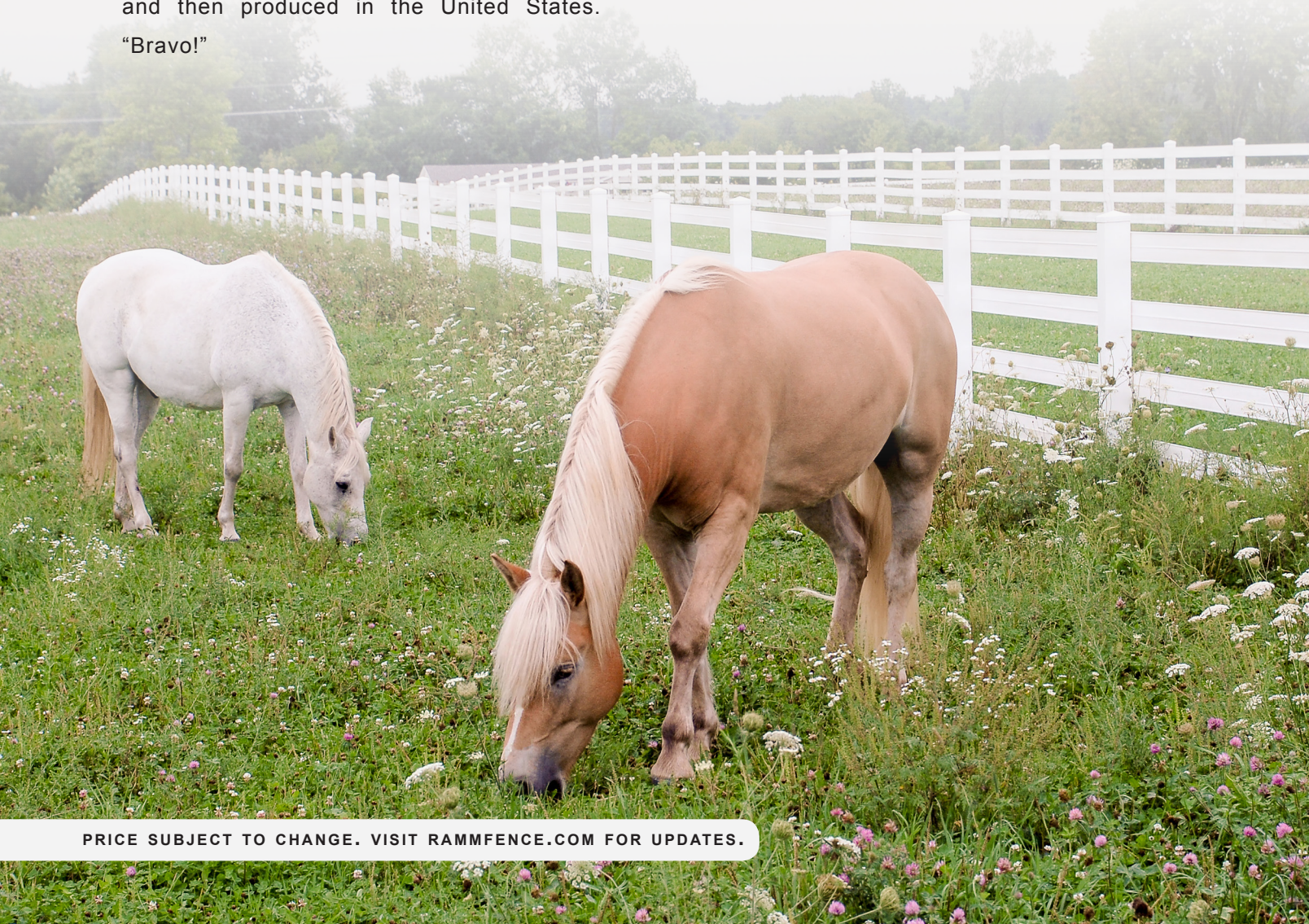


525 Plus is our premium and most asked for Flex rail that closely resembles traditional board fence. It carries a **Ltd. Lifetime Mfg. warranty, that is transferable one time.** No other fencing on the market today offers this benefit! Use in combination with our other rails to create a custom fence made for your particular horses. The rails are also saturated with UV inhibitors and anti-fungicides.

Flex Fence® FAQ

Who was the first originator of Flexible Fencing? A well kept secret! In 1957, the original flexible fencing was patented in Italy and then produced in the United States. "Bravo!"

- 5.25" rail size
- Three 12.5-gauge pre-straightened galvanized high-tensile wires
- 4,200 lbs of break strength per rail
- Hot dip galvanized steel and powder coated brackets, used with ring shank nails for strength
- Flexes 6"-8" on impact leaving no stress marks
- Never paint this rail
- Longest warranty on the market





- 1 3½" ring shank nails
- 2 Bracket design allows movement upon impact
- 3 5¼" wide rail flexes 6"-8"
- 4 Hot-dip galvanized steel & powder coated brackets
- 5 Three 12.5-gauge pre-straightened galvanized high-tensile wires

NOTE: Unroll fencing rather than pulling from the center. Folding the rail flat onto itself will create a weak spot when tension is pulled. Be sure to keep a curve in the fence rail when folding.

FROM

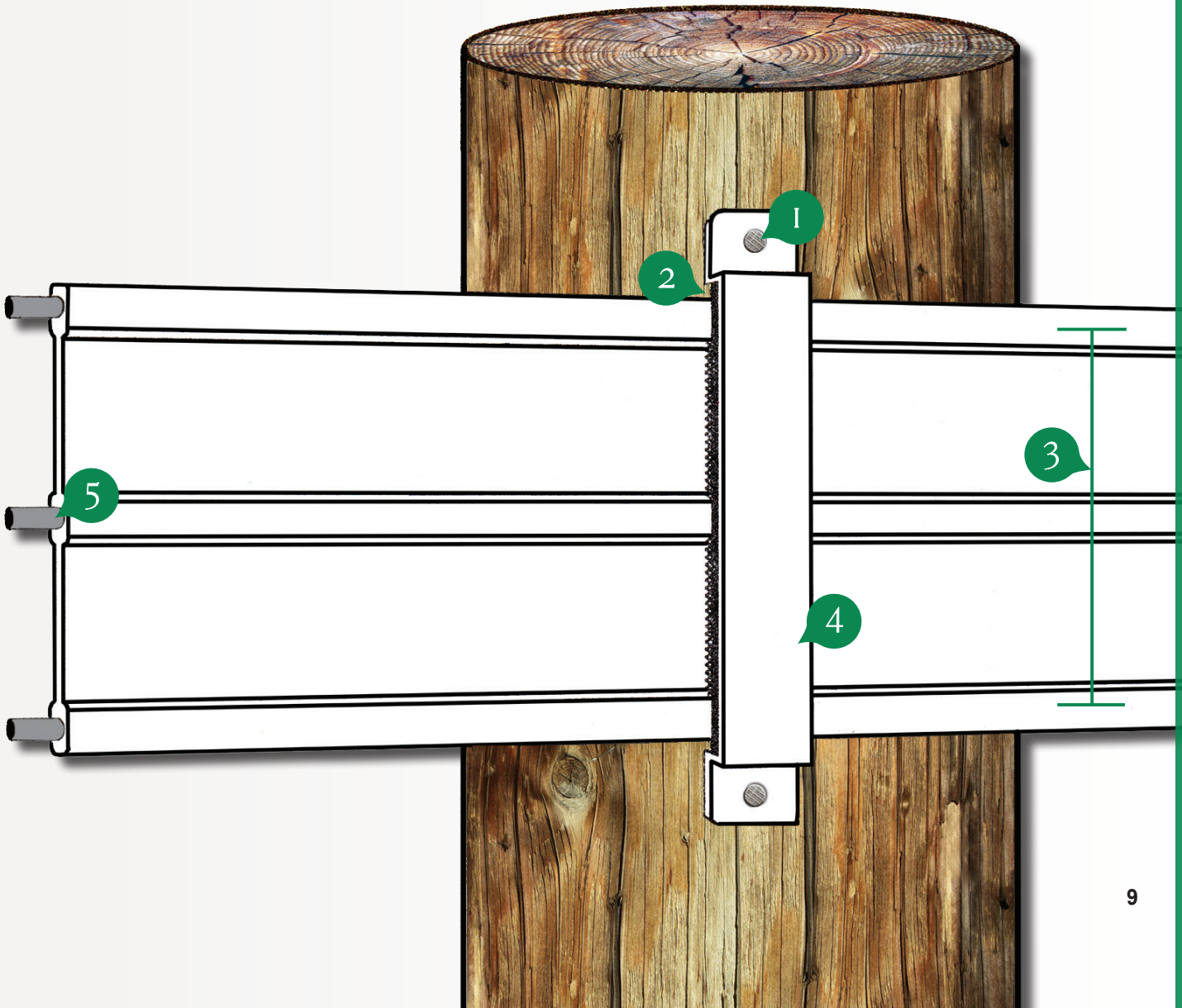
\$0.75/ft*

SKU: 525660L*

RAIL ONLY

*Based on full
660' roll usage

*Available in colors:   





Teena & Steve N., GA

Our objective was to install attractive, low maintenance fencing at reasonable prices using high quality materials. Having little experience in this area, we could not have had a more knowledgeable sales rep to walk us through this process. We had many questions and were provided top-notch advice. We were equally impressed with the shipping arrangements, condition of products on arrival, care in which our order was packed and the prompt arrival. RAMM offers the best products on the market and their customer service is second to none! Thanks RAMM!

425 Flex Fence®



425 is the workhorse of our Flex Fence® rails. More economical than our premium 525 Plus, the 425 still features the same polymer coat thickness and break strength. The 425 is popular in 4 rail configurations or 3 rails with a line of Shockline electric fencing. Not only is 425 Flex Fence® UV-protected to give you a fence that does not fade, it will never shatter or splinter.

Flex Fence® FAQ

Where can you use Flex Fence®? This fence offers a safer alternative and flexibility in work areas. It can smoothly flow around rounded corners, including round pens to create a safer training area. It flows up and down hills smoothly, unlike rigid 'sectioned' fencing. It can also be used with cattle or other animals at your farm!

- 4.25" rail size
- Three 12.5-gauge pre-straightened galvanized high-tensile wires
- 4,200 lbs of break strength per rail
- Hot dip galvanized steel and powder coated brackets, used with ring shank nails for strength
- Flexes 6"-8" on impact leaving no stress marks
- Never paint this rail
- 30-year ltd. mfg. warranty





FROM

\$0.59/ft*

SKU: 425660*

RAIL ONLY

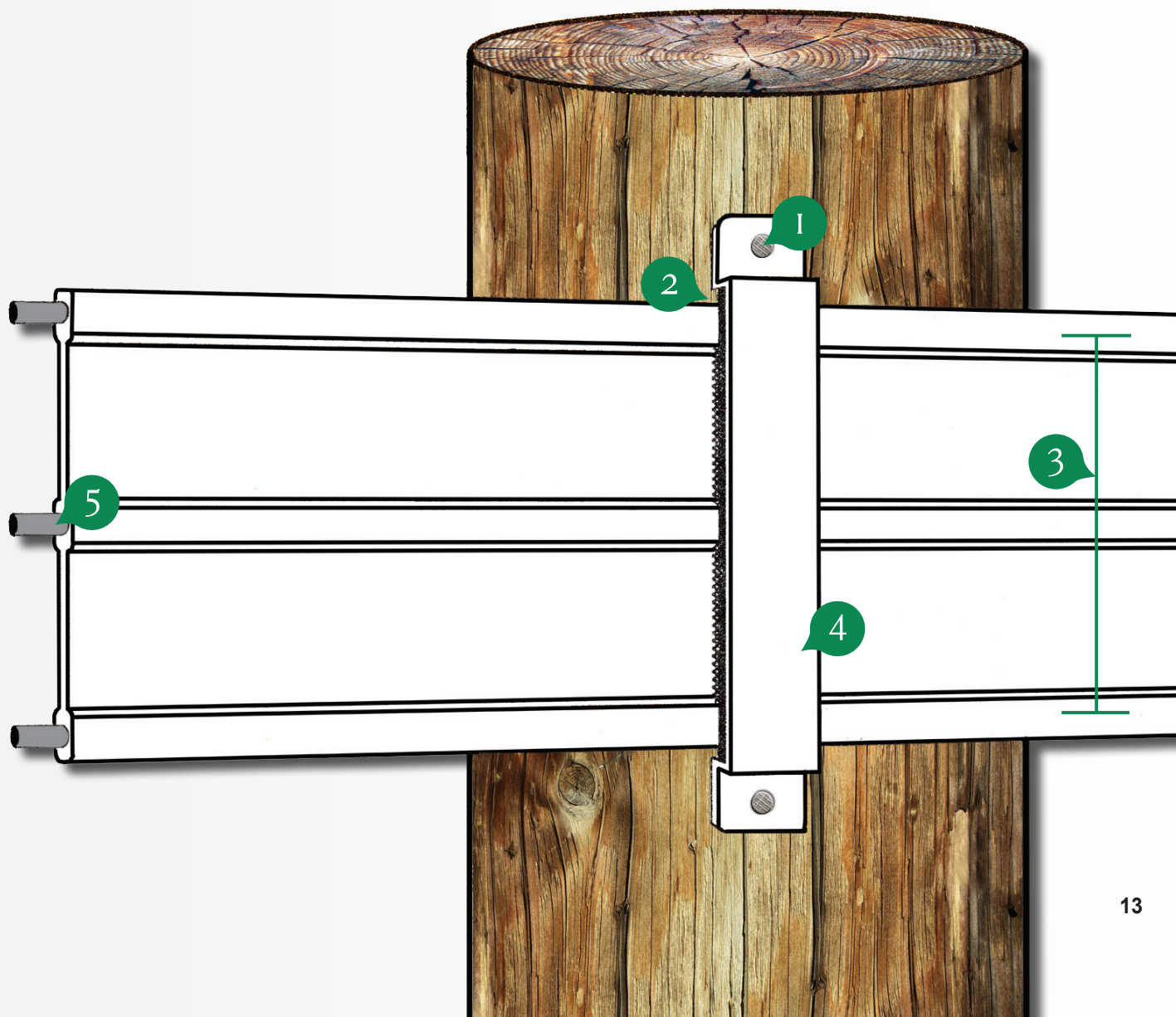
*Based on full

660' roll usage

*Available in colors:   

- 1 3½" ring shank nails
- 2 Bracket design allows movement upon impact
- 3 4¼" wide rail flexes 6"-8"
- 4 Hot-dip galvanized steel & powder coated brackets
- 5 Three 12.5-gauge pre-straightened galvanized high-tensile wires

NOTE: Unroll fencing rather than pulling from the center. Folding the rail flat onto itself will create a weak spot when tension is pulled. Be sure to keep a curve in the fence rail when folding.



Per4mance Flex Fence®



When you want an **economical rail** that is safer, affordable, and visible with a break strength rating, consider Per4mance for your horses needs. It is saturated with UV inhibitors and antifungals to help last longer than ever. This rail gives you the look of a Flex Fence®, but compares closely to competitor fencing found in big box stores. You are getting a **safer alternative to board fence, much lower costs and you never have to paint this rail.**

Flex Fence® FAQ

How does the cost of RAMM Flex Fence® compare to that of board fence? RAMM's Flex Fence® has a sensational benefit-cost ratio. With oak board costs rising, our prices are competitive. However, add in the benefit of never painting the rail, rated break strength, flexibility, continuous rail...hands down, Flex Fence® is the smarter choice.

- 3.75" rail size
- Three 15-gauge pre-straightened galvanized high-tensile wires
- 2,700 lbs of break strength per rail
- Hot dip galvanized steel and powder coated brackets, used with ring shank nails for strength
- Flexes 6"-8" on impact leaving no stress marks
- Never paint this rail
- 25-year ltd. mfg. warranty





FROM

\$0.52/ft*

SKU: 660*

*Based on full

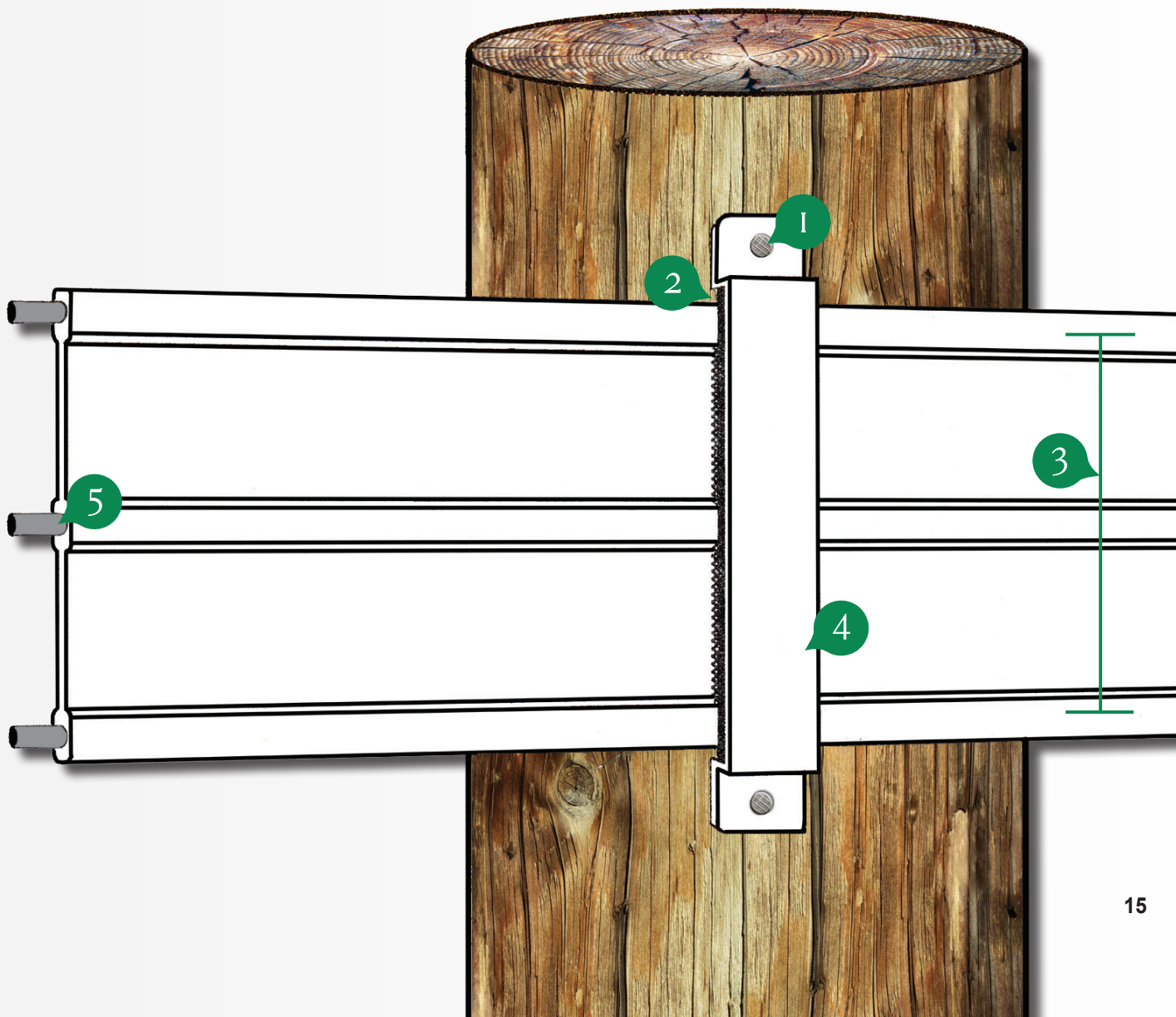
RAIL ONLY

660' roll usage

*Available in colors:   

- 1 3½" ring shank nails
- 2 Bracket design allows movement upon impact
- 3 3¾" wide rail flexes 6"-8"
- 4 Hot-dip galvanized steel & powder coated brackets
- 5 Three 15-gauge pre-straightened galvanized high-tensile wires

NOTE: Unroll fencing rather than pulling from the center. Folding the rail flat onto itself will create a weak spot when tension is pulled. Be sure to keep a curve in the fence rail when folding.



Flex Fence® Hardware

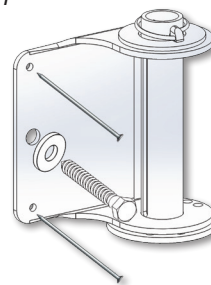
Our engineers have designed, as well as field tested, all the **Flex Fence®** hardware we supply. Each piece is first hot-dip galvanized then powder coated to ensure it will hold up for the lifespan of your fence. Brackets allow the fence to flex on impact and can be determined for 8', 10' or 12' post spacing.

- **End Tighteners** are unique to RAMM Flex Fence®. They allow one person to tighten the fence run. One end tightener, along with one end plate, is needed for a 660' straight stretch of rail. End tighteners can also be used at the start of your fence and at the end of your fence (depending on layout).
- **Line Brackets** are securely fastened to the post with ring shank nails.
- **Splice Plates** seamlessly joins two rails.
- **End Plates** cleanly terminate the rail opposite of an end tightener on 660' stretches of fence or less. (End tighteners can also be used on both ends depending on layout).

Flex Fence® hardware makes tensioning your fence easier. A possible one person installation. Special brackets are necessary for inside corners, round pens, or sweeping corners when the rail is placed on the inside of your posts. Our knowledgeable staff will be happy to explain how to install any special brackets and lag bolts.

END TIGHTENER KIT

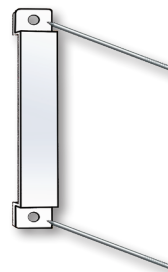
ITEM: ET*



FROM
\$22.98 EACH

LINE BRACKETS

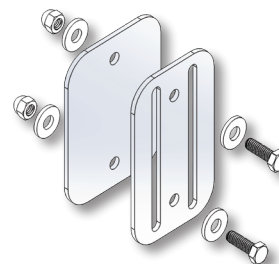
ITEM: NB*



FROM
\$1.99 EACH

SPLICE PLATE KIT

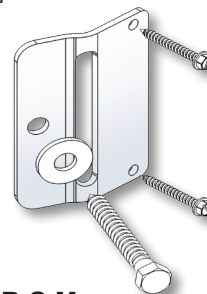
ITEM: SP*



FROM
\$8.98 EACH

END PLATE KIT

ITEM: EP*



FROM
\$8.98 EACH

*Each available in:   

Bracing

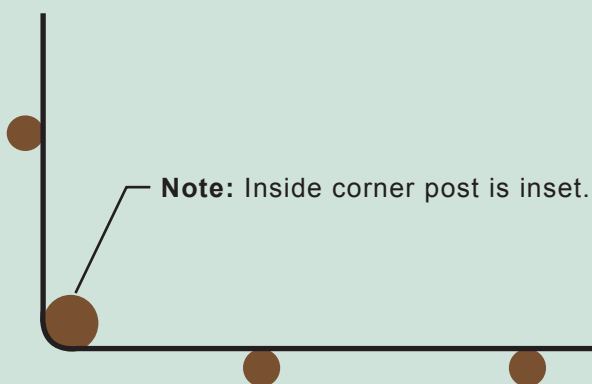
Every tensioned fence needs proper bracing for the fencing to perform as it should for years. Bracing is not difficult, but it is **the KEY to a long-lasting fence** for your horses. A diagonal braceplate is used to attach your diagonal brace post to your end post during installation.

Our staff will gladly talk to you about bracing prior to your installation. They can direct you to our website, **rammfence.com** and show you how to locate our installation video and our mfg. installation manual. We are also happy to talk to your installer of choice and answer any questions they may have.



SCAN WITH YOUR
MOBILE DEVICE'S QR READER
TO VIEW OUR INSTALLATION VIDEO.

*Diagram of post placement with rail
▼ on the inside of your pasture ▼*



DIAGONAL BRACEPLATE

ITEM: BRACEPLATE



\$3.89 EACH



- Use round posts; sizes listed in mfg. installation manual.
- The fence is strongest when the rail is on the inside of the posts.
- **Follow mfg. installation manual** for corner post placement.
- We recommend electric, especially in high traffic areas.

*Our warranty is against any manufacturer's defect or weathering, **not** improper installation that causes failure.*

*Also, H-bracing should not be used with more than 6 total wires in your fence. Remember, 3 wires per wide Flex Fence® rails & single wires with Shockline and Raceline. We recommend that twitch wire is **never** used with any of RAMM fence systems.*

Wood Posts



Your posts are the backbone of your fence system. Each corner/end post, with tensioned fences, can have up to 3,000 lbs of “pull” exerted on that post.

Getting pressure treated pine posts with a retention level of .40 should give you 30 years of fence life with your horses.

As an added benefit to our customers, RAMM offers pressure treated pine posts. These posts are available for pickup or can be delivered to your farm in half or full truck loads.

- Choose ‘turned’ over tapered posts
- Look for .40 retention rated levels
- Cracks are called checking. If posts are properly pressure treated, checking should not affect performance
- Check mfg. installation manual for proper size posts for northern and southern states
- Know your frost depths in your area for proper installation

WOOD POSTS SHIP IN BUNDLES.

SEVERAL LOCATIONS FOR POSTS MAY BE NEAR YOU.

Recommended Post Usage	4" X 8"	5" X 8"	6" X 9"
Coated Wire Posts	✓	✓	
Electric Fence Posts	✓	✓	
Flex Fence® Corner Posts	✓	✓	✓
Flex Fence® Line Posts		✓	
Brace Posts	✓		
Board Fence Posts	✓	✓	
Strength Test (lbs)	915-1025	1425-2450	3080-3455

RAMM Paint



RAMM fence and barn paint is longer lasting and more flexible than other paints. In weather extremes, the adhesion properties accommodate for expansion and contraction preventing chipping, peeling and cracking.

RAMM fence and barn paint is made with a premium fade resistant acrylic, fortified with UV inhibitors, and elastomeric polymers. This provides years of lasting durability. Easily applied by spray, brush, or roller, featuring one-coat coverage. Made with a water based formula, RAMM fence and barn paint resists mold, fading, peeling, and weathering. It dries with a semi-gloss finish that is livestock safe and easy to clean up with soap and water. It can be used on posts, wood plank fence, barns, roofs, or even concrete handling all of your farms painting needs.

- Wood needs to be dry before being painted.
- Damp treated posts can be augered or driven into the ground, but allow posts to dry prior to painting.
- A paint mitt can be a faster way to paint installed posts as well as a roller or paint brush.
- Paint clean up is a snap with soap and water as this is an acrylic paint
- Available in 5 gallon containers or 55 gallon drums

APPROX. 50 POSTS PER BUCKET

\$68.00

SKU: | 5 Gallons

FPB | Black

\$78.00

SKU: | 5 Gallons

FCBR | Brown

\$88.00

SKU: | 5 Gallons

FCW | White

CALL FOR PRICING ON 55 GALLONS



NOTE: Only paint when posts are dry. Choose days over 50°F to paint for proper coverage.

Flex Fence® Installation Tips



STEP 1

With posts up, mark the spacing of the rails.



STEP 2

Unroll fence rails & layout beside posts.



STEP 3

Fasten one end of rail to the post, install one rail at a time with an end tightener.



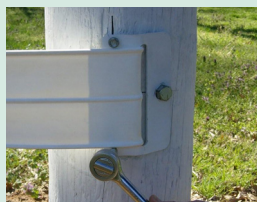
STEP 4

Position rails and secure in place with brackets.



STEP 5 (IF NEEDED)

Follow splice plate instructions for longer rails.



STEP 6

Secure other end of rail to the other end of the post using an end plate.



STEP 7

Remove any excess slack from the rails.



STEP 8

Remove slack from rail using ratchet handles & spoolers.



STEP 9

Repeat step 8 until all slack is removed & rails are straight.



STEP 10

Sit back and enjoy your low-maintenance fence for years to come!

**Refer to Flex Fence® Installation manual found at rammfence.com & our installation video for detailed instructions before installing!*

1 End tighteners

2 Line brackets

3 Splice plate

4 Rail spacing dependent on animal

5 Post spacing 8'-12' on-center

6 Top rail height 50"-54"

7 Post height 52"-56"

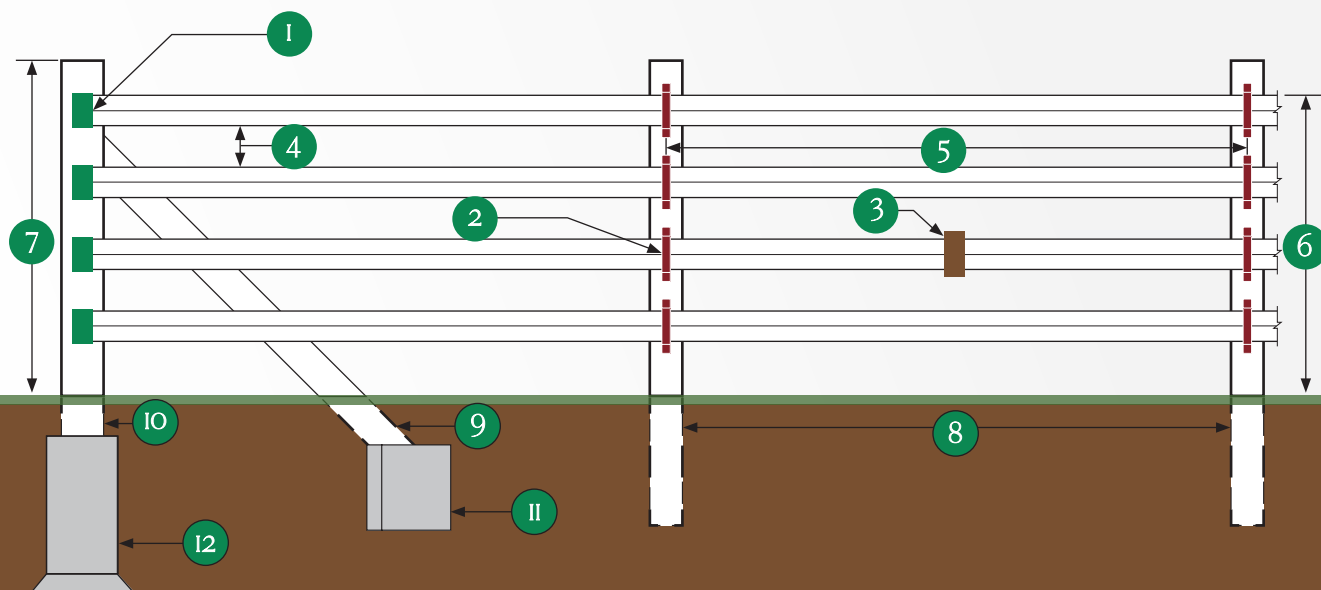
8 Line posts (4"-5" round, 7'-8' long)

9 Brace post (4" min. round, 7' long)

10 End/corner post (6" round min)

11 Concrete footers (18" or below frost line)

12 Concrete footers (36" or below frost line)



Flex Fence® Round Pen



A Flex Fence® round pen can be one of your most used tools. The permanent Flex Fence® round pen offers visibility and flexibility for young horses in training, as well as horses that need to be worked in a safer area.

With the rail inside facing your horse, this is a powerhouse round pen with rated break strength, unlike metal pens rated light weight, or heavy duty. Best of all, there is no rusting or denting. Choose your fence rail or combination of fence rails for your horse's particular needs. Use for lunging, training, temporary turnout and more!

- You choose the number and combination of rails for your horse's particular needs
- You choose rail spacing based upon the age of your horses, the breed, and size. Remember no more than 11" between rails for average horse sizes.
- Not only for round pen work, but also great for beginner riders or lessons
- Flex Fence® rail is kinder to both horse and rider
- Safer alternative to portable panels



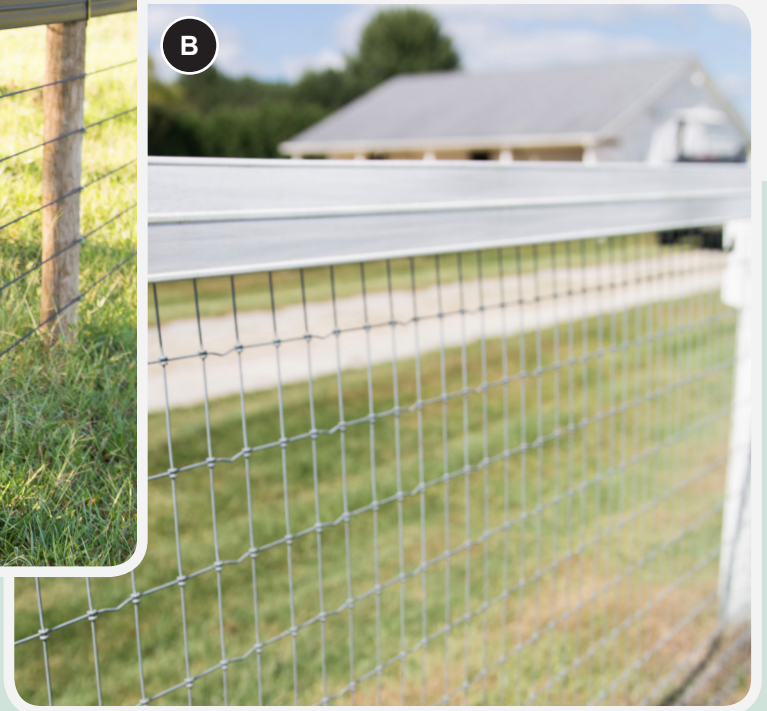
Combination Fence

Combination fence is any number of different sized rails you choose for your horse's particular needs. You can combine wider rails with Raceline or Shockline for closer rail spacing. Use a combination of electric or woven wire with a top sight rail of Flex Fence®. You can even create a nursery paddock with rails that are closer at the bottom of your fence and then get wider at the top so your fence grows with your horses.

A) In the first photo below, there is a top rail of 425 Flex Fence® in combination with our coated wire option, Raceline (both in black).

B) In this photo, there is a top rail of our 525 Plus Flex Fence® (in white) combined with our 2x4 Non-Climb mesh.

You choose and design what you need. Our friendly staff can help you choose a fence that really works for you and your horses!



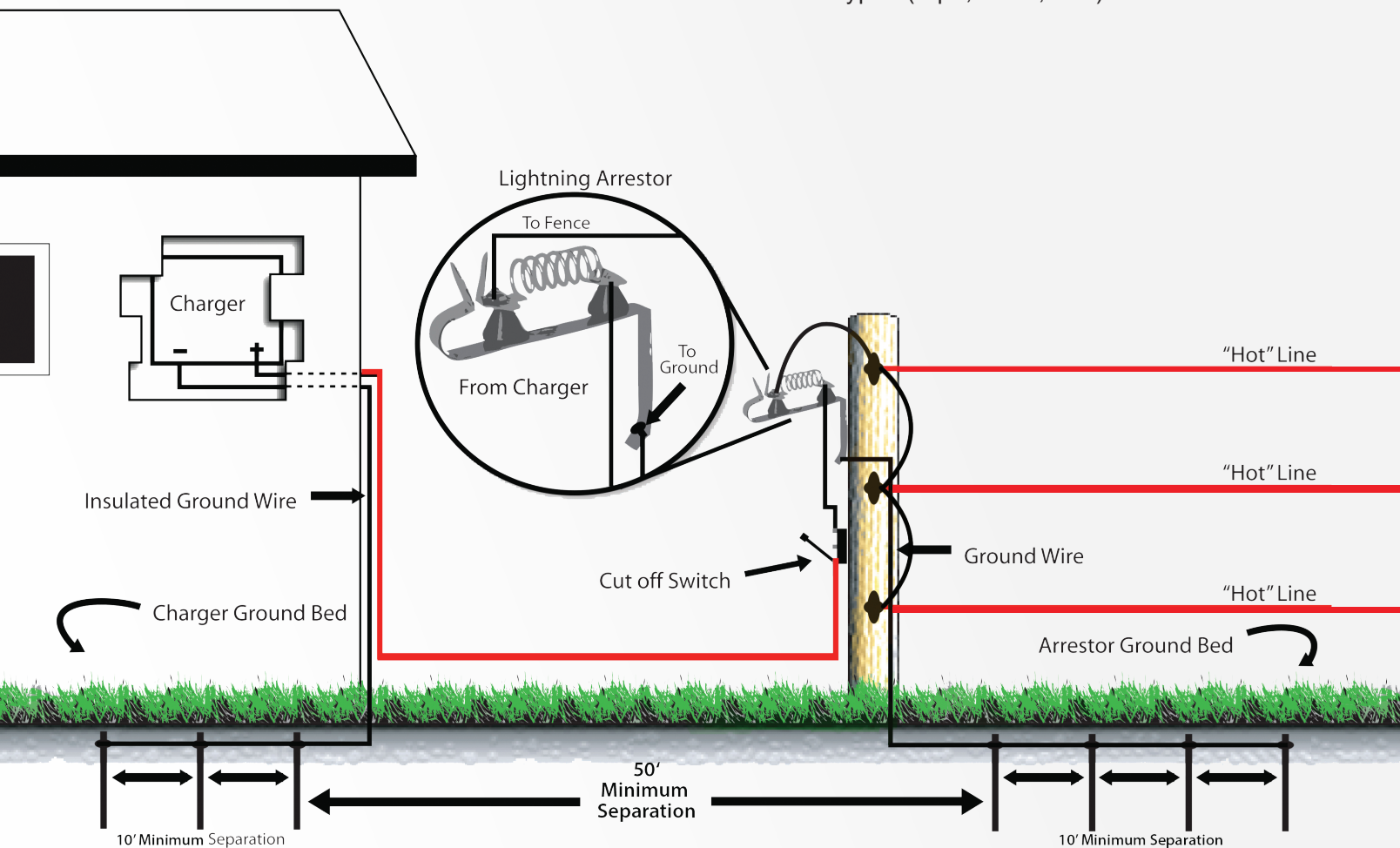


Electric Fence 101

Charger - Also called an energizer, this provides an electric pulse which streams through the fence about once per second. The effectiveness of a charger is based on many different things: soil moisture, size of ground field, type and amount of fence. The most important measure of output is the Joule rating. More joules does not equate to higher shock if the horse touches the fence, rather a more steady flow should there be resistance along the fence, such as weeds. A good rule of thumb is 1 joule for a 5-acre pasture. The

output of the charger should be selected to provide between 4000-5000 volts through the fence at the point furthest from the charger. This “bite” felt by the horse is short lived and not enough to cause physical harm.

Insulators - The insulators prevent the electric current from touching objects (such as the fence post) which would ground out the circuit. Various types of insulators are available. Be sure to select those that are designed to work with whatever style of electric fence you have, as not all insulators will work with each types (tape, braid, etc.).



Ground System - Moisture is the conductor of electricity in the ground field and is critical for completing the circuit. This is the key to a good electric fence and often the most common source of failure. Consider that the grounding system is similar to a television antenna; the larger the antenna, the greater the reception will be. Ground rods serve to collect the voltage from the fence and deliver it back to the charger through the earth. The amount of shock felt by the horse is directly proportional to the amount of power returned back to the fence from moisture at the grounding field. Therefore, it is critical that the field is large enough to collect all available power.

We recommend at least 3 ground rods, 5' long and spaced 10' apart in an area of constant ground moisture. Ground beds should be a minimum of 30' and preferably 50' from one another if multiple ground beds are used. NEVER install ground rods within 50' of utility ground, buried water lines, or telephone poles. In some situations, the grounding field is less than optimal. This would include very well drained soil, sandy soil, deeply frozen soil, or very rocky conditions. In all of these cases, there is a lack of moisture in the ground field. In these sub-optimal conditions, multiple ground fields are often required as well as a ground rail of electric on the fence. If your soil conditions fall into these categories, please speak with one of our representatives to determine the best setup for your situation.

High-Voltage Burial Wire - It is important to select the correct wire to connect to your electric fence. Choose wire rated to carry up to 20,000 volts. DO NOT use insulated wire that is designed for residential use, as this is not rated to carry the voltage emitted for your fence charger. This burial wire is used to connect the charger to the fence and to the ground system, between individual ground rod. It "jumps" the electricity from the primary hot line of the fence to a lower strand.

It is important to keep the type of wire and couplings consistent with the fence system used. For example, ElectroBraid™ utilizes copper threads in the fence braids, therefore, burial wire and connectors must be copper to ensure that the fence performs properly. Most other types of electric fence can utilize galvanized and stainless steel hardware.

Lightning Arrestor - Acts as a buffer between the fence and the charger and helps to prevent damage to the charger should there be a lightning strike. The lightning arrestor is installed between the charger and the fence.

Cut-Off Switch - Acts to interrupt the flow of electricity from the charger to the fence. It can be installed between the charger and the fence to provide an easy way of disconnecting the power without having to return to the barn (generally where the charger is located).

Raceline Coated Wire

Raceline is a 12.5-gauge high-tensile wire that is molecularly bonded to a unique polyolefin blend of flexible plastic. This helps to achieve the strongest coated wire on the market. It has a break strength of up to 1,400 lbs per rail and flexes 6"-8" on impact.

Raceline can be installed using several rails or in combination with Shockline or wider Flex Fence® rails. This is where you have the opportunity to customize your fence to your horses specific needs.

Remember, to have safer rail spacing; no more than 9"-11" between rails for average sized horses.



FROM

\$0.13/ft*

SKU: RC*1320

RAIL ONLY

*Based on full

1320' roll usage

*Available in colors:   

NOTE: Use a *spinning jenny* to unwind all Raceline and Shockline to prevent tangling and bending of the wire. Find this item on **pg. 43**.



Shockline Coated Wire

Shockline is similar to Raceline, but incorporates 3 consistent stripes of purified carbon to conduct electricity. Shockline has up to 1,400 lbs of break strength per rail and electricity so your horses will respect the fence lines. It also flexes 6"-8" on impact. Shockline can be used in combination with Raceline or other Flex Fence® rails.

- 1 5/16" diameter
- 2 One 12.5-gauge pre-straightened galvanized high-tensile wire
- 3 3 stripes of purified carbon
- 4 Claw insulator
- 5 1½" stainless steel screws
- 6 2" extra-wide barbed staples class-3 galvanized



FROM

\$0.14/ft*

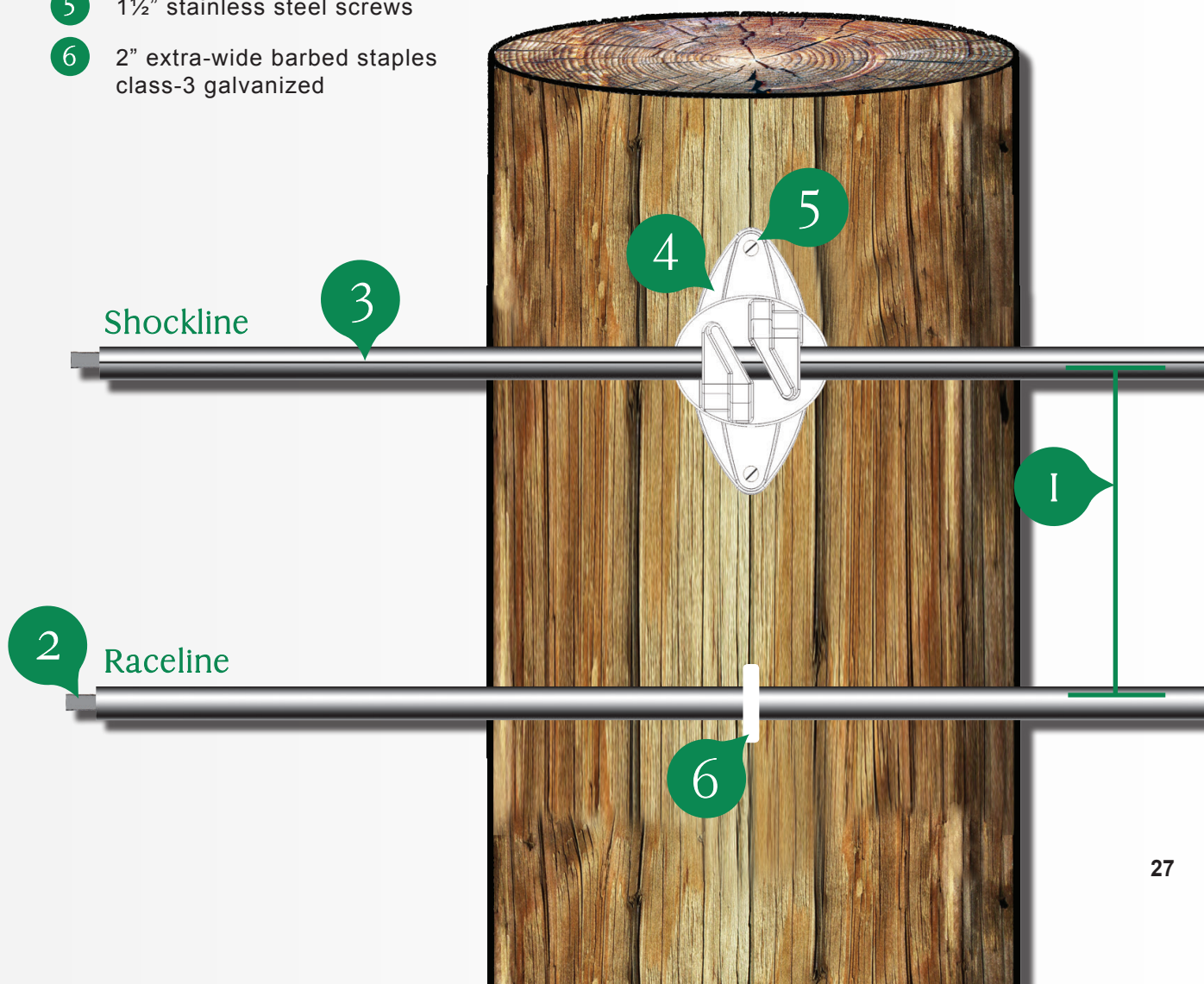
SKU: 1320SL*

RAIL ONLY

*Based on full
1320' roll usage

*Available in colors:   

SCAN WITH YOUR
MOBILE DEVICE'S QR READER
TO VIEW OUR SHOCKLINE VIDEO.







Kim M., TN

*Just a few days after purchasing my coated wire and
having the fence up, my horse got spooked
by a guy and some dogs coming out of the woods.
He ran from 0-60 right into the fence and just bounced off.
I love my RAMM fence!*

Raceline / Shockline Hardware

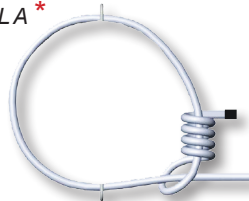
Our engineers have developed components to make installation easier and faster for the DIYers and professional installers. Our staff will help answer all of your questions with any components you need.

- **End Loops** are designed with ease of installation in mind. Used at the ends of your fence, they simply loop over your wood end post like a lasso. Pull tight and your fence line is ready to install. Acts as an insulator for Shockline.
- **In-Line Tensioners** easily attach to the end loop allowing for the coated wire to be tensioned.
- **Claw Insulators** are made to easily insert the electric rail through the claw and hold the rail to the wood post.
- **T-Post Line Insulators** are used with metal T-posts to hold the rail in place.
- **2" Extra-Wide Barbed Staples** can be used with Raceline to hold the rail in place on the wood post.

Note: If you bend any coated wire onto itself, then put tension on it by pulling, you will damage the integrity of the wire. This is why **we recommend using a spinning jenny** to unwind Raceline and Shockline. You can find this item on **pg. 43** along with other necessary tools and accessories.

END LOOP ASSEMBLY

ITEM: ELA*

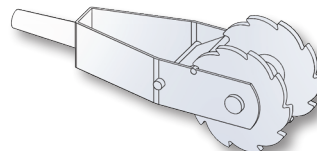


\$3.98 EACH

*Available in: ☐ ☒ ☐

IN-LINE TENSIONERS

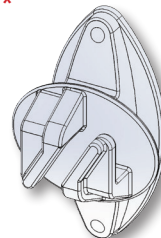
ITEM: RTI



\$4.98 EACH

CLAW INSULATORS

ITEM: ICC*

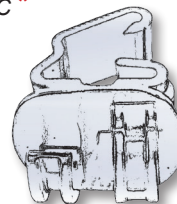


\$8.98 /PACK

*Available in: ☐ ☒

T-POST LINE INSULATORS

ITEM: TPIC*



\$7.25 /PACK

*Available in: ☐ ☒

2" EXTRA-WIDE BARBED STAPLE

ITEM: BS2W



\$2.98 /LB

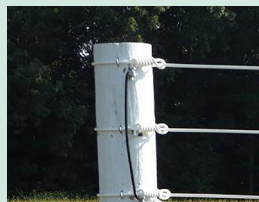
Raceline / Shockline Installation Tips



STEP 1
Mark posts with desired placement.



STEP 2
Use spinning jenny to lay out rail and help prevent breakage.



STEP 3
Mount rail to starting point and line posts.



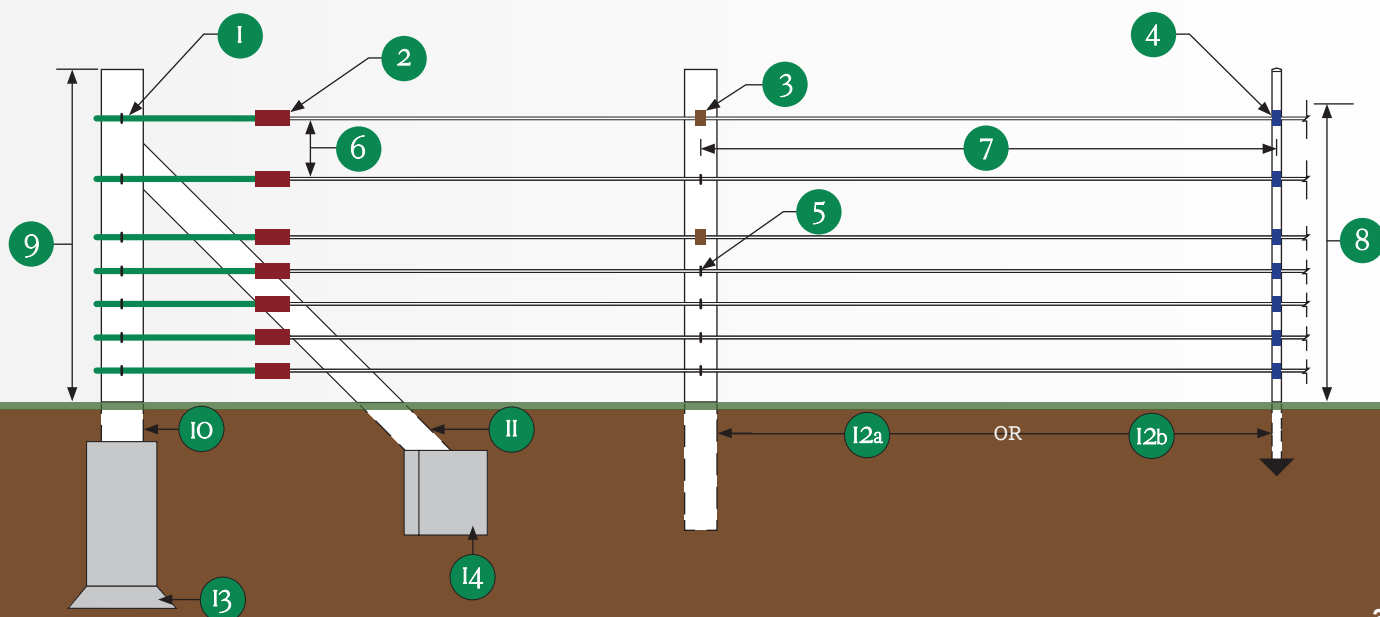
STEP 4
Tighten rails.



STEP 5 (IF NEEDED)
Connect electric if using Shockline.

*Using the right hardware will give you peace of mind knowing your horses are in a safer pasture designed properly.
Fax or email us your layout and one of our knowledgeable experts will provide an estimate for you.
They will gladly answer any questions you may have.*

- | | |
|--------------------------------------|---|
| 1 End loops | 9 Post height 52"-56" |
| 2 In-line tensioners | 10 End/corner post (6"-7" round) |
| 3 Claw insulators | 11 Brace post (4" round) |
| 4 T-post insulators | 12a Wood line posts (4"-6" round) |
| 5 2" extra wide barbed staple | 12b T-posts (used for coated wire only!) |
| 6 Rail spacing dependent on animal | 13 Concrete footers (36" or below frost line) |
| 7 Post spacing 8' to 12' on-center | 14 Concrete footers (18" or below frost line) |
| 8 Top rail height 50"-54" | |



Pro-Tek Electric Tape



Pro-Tek Electric Tape is stronger than farm store brands with 15 stainless steel wires. These wires will not corrode over time and provide excellent conductivity. This 1½" wide woven polyethylene tape provides outstanding visibility and long lasting durability. If you can swing a hammer and hit a nail, Pro-Tek Electric Tape is an easy installation for a weekend project.

RAMM's Pro-Tek Electric Tape has a lifespan which far exceeds most other products on the market and carries a 20-year limited warranty.

Pro-Tek Electric Tape is UV-protected against deterioration from sunlight and has a break strength of up to 750 lbs. It comes in 3 colors and is available in both 1320' and 660' rolls.

Electric Tape FAQs

I have mares and foals, will Pro-Tek Tape work well for all my horses? RAMM's Pro-Tek Tape is used on some of the most prestigious breeding farms. It is hand-tensioned, wider than braids or ropes, and it's woven polyethylene allows for more give if horses or foals come in contact with the fence.

What maintenance is involved? After a storm or inclement weather, check to be sure that branches are not on your fence. If you see any loose fence rails, simply hand tighten the rail keeping it taut. Periodically check your electric fencing with a fence tester to be sure it is working properly.



- 1 1½" wide woven UV-protected polyethylene tape
- 2 Stainless steel insulator screws (2)
- 3 Universal post insulator
- 4 15 stainless wires

NOTE: Tension Pro-Tek Electric Tape by hand.

Use on wood, PVC, T-posts or T-posts with sleeves.



FROM

\$0.13/ft*

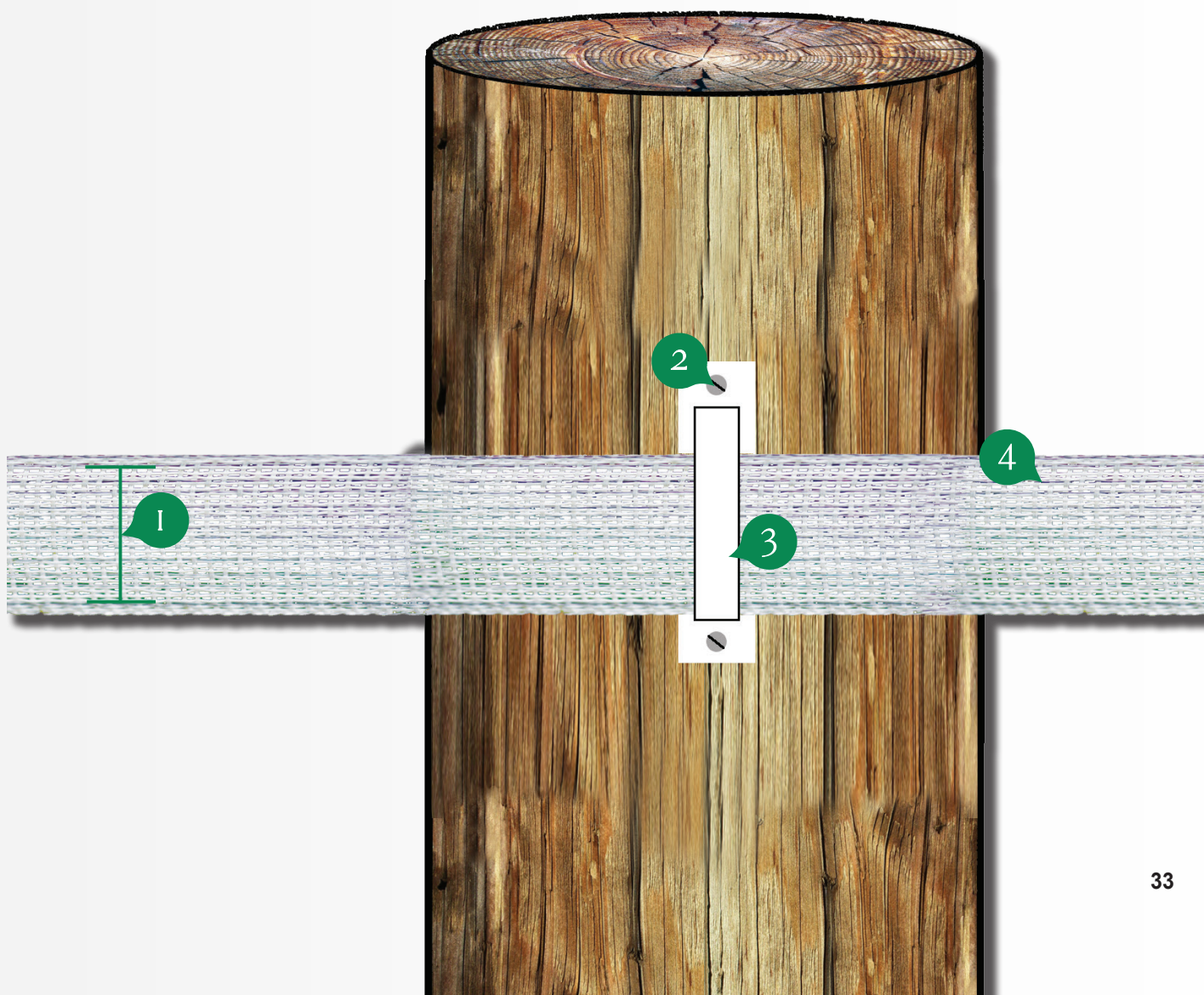
SKU: 1320PT*

TAPE ONLY

*Based on full

1320' roll usage

*Available in colors:   







A Lifelong Customer

Deciding to add pastures, I thoroughly evaluated a variety of fence materials and suppliers and chose to purchase Pro-Tek 1½" Tape and Pro-Tek Braid from RAMM Fence. I received "red carpet" treatment in planning my fencing project. My neighbor also installed new fence...purchased from a local feed store...and the difference in quality is striking. I look at my safe and sturdy Pro-Tek fence and compare to their broken, frayed and non-functional product. My fence has weathered assaults from horses, cattle, intense sunlight and even falling trees. Because of the high quality of RAMM Fence products and the superior customer service, you can count on Seguin Sport Horses as lifelong customers!

Pro-Tek Braided Electric

Pro-Tek Braided Electric is a 1/3" diameter checkered braid with 9 stainless steel wires woven with polyethylene fiber; no copper hardware required. It may be used alone or in combination with many other fencing options.

Stainless wires are the better alternative to copper that oxidizes and loses its conductivity. These stainless wires will disperse the charge more consistently. Its flexible design allows it to go around curves, corners, and up and down hills making installation a breeze!

Because of the aerodynamics of the fence, there is less wind resistance in keeping the rails taut. It can be used with wood, PVC, T-posts, or T-posts with sleeves. Light bracing is required with square or round posts.



Pro-Tek Braided Electric comes with a 30-year limited warranty. It is UV-protected which also helps with mildew resistance. It has a break strength of up to 1,400 lbs. and will not corrode over time.

ElectroBraid™



ElectroBraid™ is a 1/4" braid with a double helix of 2 copper wires braided with polyester fibers. Stainless steel hardware cannot be used with copper wire based braid. Please see **pages 36-42** for ElectroBraid™ specific installation materials.

ElectroBraid™ comes with a 25-year limited warranty. It also has a break strength of up to 1,300 lbs. and is UV-protected to prevent fading and mildew.



FROM

\$0.14/ft*

SKU: PB1320 | *Based on full
RAIL ONLY | 1320' roll usage

Pro-Tek Braided available in:



FROM

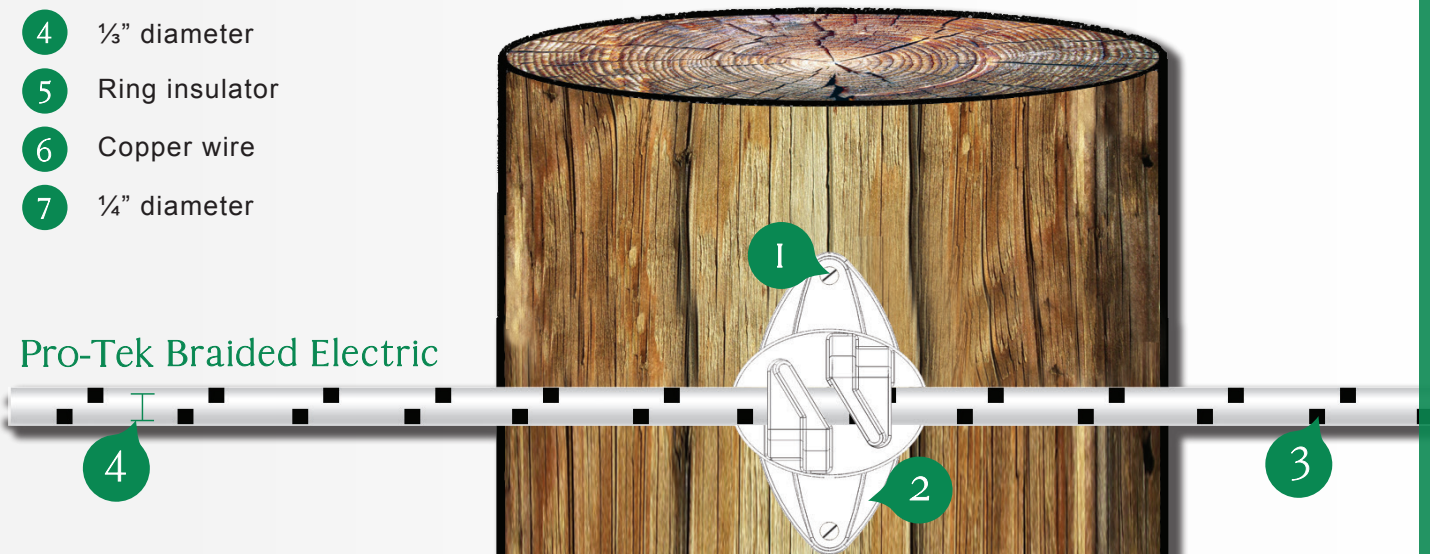
\$0.18/ft*

SKU: 1000EB* | *Based on full
RAIL ONLY | 1000' roll usage

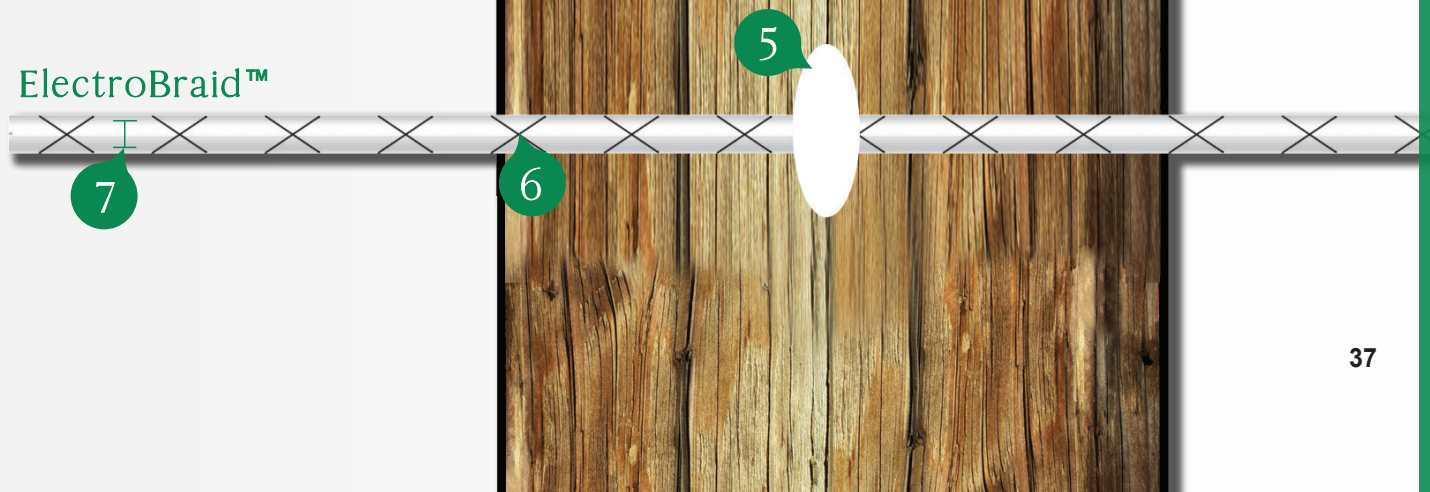
*ElectroBraid™ available in:

- 1 1½" stainless steel screws
- 2 Claw insulator
- 3 Stainless steel wire
- 4 ⅓" diameter
- 5 Ring insulator
- 6 Copper wire
- 7 ¼" diameter

Pro-Tek Braided Electric



ElectroBraid™



Fence Chargers

Not all fence chargers are created equal!

Our chargers carry a 3-year warranty* which even covers lightning damage.

All of our chargers are low impedance meaning they are designed to safely push the electricity through a fence which may have contact with weeds.

Solar Charger



\$266.67

Solar Charger

12V - 0.5 Joule

ITEM:

DSPW500S

This solar charger is designed to electrify an area up to 100 acres. This 12V solar powered unit is both energy-efficient and environmentally-friendly. Perfect for remote, sunny areas where electricity cannot be accessed.

Battery Powered Charger

\$144.98

Battery Charger

12V - 2.0 Joules

ITEM:

DSPW2000B

Don't have access to an AC power source? Our 12V battery operated energizers offer the same ultra low impedance technology without the plug-in cord. Controls up to 200 acres. This charger uses a 12V Deep Cycle Marine Battery, not included.



Plug-In Charger



\$94.98

Plug-In Charger

110V - 1.0 Joule

ITEM:

DSPW1000

This model provides 110V of energy to contain horses, cattle and keep predators out! Controls up to 100 acres or 25 standard miles of wire. Whatever your requirements, there is a low impedance charger to meet your needs.

**NO REGISTRATION IS REQUIRED TO VALIDATE OR EXTEND OUR WARRANTY.*

Fence Testers



Digital Volt Meter

For use with all types of electric horse fences. The digital readout allows you to see how strong your voltage is to your fence. This is an easy, one-touch operation.

Item: DVM.....**\$49.99**



Fault Finder

This is a combined voltmeter and current meter that rapidly locates electric fence faults. This fault finder has a large LCD display that reads the electric fence's voltage and/or current.

Item: DSFF.....**\$74.98**



LED Electric Fence Tester

This LED fence tester has five indicator lights that show you the amount of voltage currently running on your fence line. This is our most economical fence tester available!

Item: R27.....**\$12.99**



Fault Finder Plus

The Power Wizard fault finder plus remote is a combined voltmeter and current meter. It rapidly locates electric fence faults and has remote control technology with 9 channels for pairing.

Item: DSFFR2.....**\$109.98**



Electric Fence Alert

Want to know if your electric fencing system is working without having to touch it? The electric fence alert will flash when your electric fence is not working properly, letting you know that your fence needs attention.

Item: EFTSL.....**\$27.98**



Fence Alarm

You are only a text message away from knowing your horse fencing system's condition and voltage readings. Fence Alarm will notify you within seconds of any fence related issue. With Fence Alarm, peace of mind is only seconds away!

Item: RPFA5005.....**\$279.00**

RAMM TIP

Always use 3 ground rods at each ground rod bed location.
Call one of our experts at 800.853.1611 to determine how many ground rod beds you will need for your layout!

Fence Grounding



Ground Rod Kit

Promotes proper grounding of fence chargers. Includes three 61" ground rods, 3 ground clamps and 50' of galvanized wire.

Item: GR3\$39.98



High-Voltage Burial Wire

10,000 volt under gate fence wire won't leak voltage into ground. Bury 12" deep in conduit.

Item: R58 (50ft).....\$11.98

Item: R108 (100ft).....\$21.98

Item: R208 (200ft).....\$49.98



Stainless Steel Split Bolt

Connect hot wire from charger or jumper line to fence. Use in conjunction with R40 and tensioner for tape.

Item: SBOLT\$2.78



U-Bolt Connector

Used in conjunction with corner tensioner to connect the hot wire from charger to the electric fence.

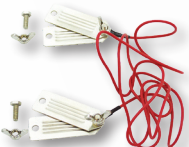
Item: UBC.....\$1.39



Electric Rope Splice

Splice or connect hot wire from charger or jumper line to fence. Only available in white. **Pack of 3.**

Item: ES.....\$3.98



Contact Clamp

Connects the fence charger to the fence rail to make it hot.

Item: R9.....\$7.98



Copper Ground Rod

72" copper clad ground rod used to promote proper grounding of the fence chargers.

Item: EBGR.....\$19.98



Tinned Copper Lead Out Wire

200' copper lead-out wire used to connect charger to fence and ground rods and to make jumper lines.

Item: EB200.....\$84.99



Copper Split Bolts

Connect hot copper wire from charger or jumper line to fence. **Pack of 10 with cable ties.**

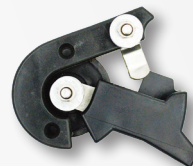
Item: EBCBOLT\$19.98



Neutral Plate Connector

Using copper jumper line, allows transfer of power from copper to other types of wire.

Item: EBNPC\$9.98



Cut-off Switch

To switch off selected electric wires on fence such as the lowest live wire when grass or snow is high.

Item: EBCOS.....\$8.99



Lightning Arrestor

Protects fence charger from lightning by diverting it to the ground. Is installed between hot rail and fence charger.

Item: MWLA.....\$8.99

Fence Tensioners & Connectors



End Loop Assembly

Use with Raceline & Shockline. Connects power from charger to Shockline. **Must use with In-Line Tensioner (see below).** *Comes in white, black, or brown.

Item: ELA*.....\$3.98



In-Line Fence Tensioner

Allows 12.5-gauge wire to attach without any connectors. Use with Tensioner handle (pg. 43).

Item: RTI.....\$4.98



End Post Fence Tensioner

Terminate and tension your fence rail at the same time! Use with Tensioner handle (pg. 43).

Item: RTE.....\$3.95



Rail Fence Tensioner

Attaches to end posts. Used to tighten up coated wire fencing. Attaches with one 5" ring shank nail for better holding power (pg. 43).

Item: RT.....\$3.98

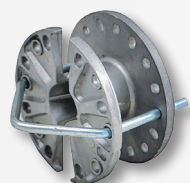


Wire Link

A quick, secure method to join two coated wires together. Can also splice wire mesh. For 12.5 or 16-gauge wire.

Item: WL.....\$1.59

Item: WL16.....\$1.99



Wire Tightener

Strongest non-splicing strainer. Install without cutting wire & tighten with 1/2" drive ratchet.

Item: WT.....\$2.98



Tape End Tensioner

Terminates electric tape at ends and gate posts. Works with wood and vinyl. *Comes in white or black. **Pack of 2.**

Item: R40*.....\$6.98



Tape Corner Tensioner

For corners or any hill change greater than 19°. *Comes in white or black. **Pack of 2.**

Item: R50*.....\$9.49



Tape Slice Buckle

Stainless steel splice buckle. Used to join two rails of electrical tape. Can also be used to repair torn or broken tape webbing.

Item: R24.....\$1.68



Tension Kit

Used to tension braid. Comes with clamp, ratchet, rope & S-hook.

Item: EBTKit.....\$32.99

Use with ElectroBraid™

Use with Pro-Tek Tape

Use with Pro-Tek Braid/Rope

Use with Shockline

Use with Raceline

Fence Insulators



Roller Insulators

Attaches braid to corner and end posts. **2½" insulator screws sold separately (pg. 43).** *Comes in white or black. **Pack of 10.**

Item: EBRI*.....\$11.69



Electric Claw Insulators

Heavy-duty, attaches electric fence to wooden line posts. **Screws sold separately (pg. 43).** *Comes in white or black. **Pack of 25.**

Item: ICC*.....\$8.98



T-Post Line Insulators

Attaches to steel T-post. Claw design. *Comes in white or black. **Pack of 25.**

Item: TPIC*.....\$7.25



T-Post Insulators

Locks to hold tape tight. Accommodates T-posts from 1¼" to 1⅝". *Comes in white or black. **Pack of 25.**

Item: TP25*.....\$6.98



T-Post Caps

Prevents horses from being impaled on steel T-posts. *Comes in white or black. **Pack of 10.**

Item: R4TR*.....\$8.98



Universal Post Insulators

Attaches Pro-Tek Tape to posts and locks to hold tight. Made of polyethylene. **Can use nails or screws (pg. 43).** *Comes in white or black. **Pack of 25.**

Item: R16*.....\$9.98



Inside Corner Roller Insulator

Used for running around the inside of a 90° corner. *Available in white or black.

Item: CLI*.....\$1.95



Ring Insulator

Attaches fence to wood line posts. *Comes in white or black. Available in heavy duty. **Installs with ring insulator adapter (pg. 43).**

Item: IRI*.....\$0.27

Item: IRI*HD.....\$0.72



6" Extended Ring Insulator

Extends electric fence 6" from wooden posts. Angled slot ensures wire retention. *Comes in white or black. **Installs with ring insulator adapter (pg. 43).**

Item: 6ERI*.....\$0.79



6" Ext. Angle Ring Insulators

Great for top electric fence. For use with ring adapter. Comes in black only. **Pack of 10.**

Item: IWR6.....\$11.98



Corner/End Tube Insulator Wrap

Creates wrap around insulators for corner and end posts. Cut to size. 100' roll. *Comes in white, black, or brown.

Item: HCT*.....\$12.98



5" Insulator Tubing

Insulate electric coated wire from wood line posts. *Comes in white, black, or brown. **Pack of 100. Use 2" Barbed Staples (pg. 43).**

Item: HC4T*.....\$9.98

Tools and Accessories



Spinning Jenny

Used with Raceline or Shockline. Allow rail to unwind without kinking/tangling. Comes with extensions.

Item: SJ.....\$59.00



High-Tensile Wire Cutters

Heavy-duty vital tool to have when you are installing high-tensile wire fencing systems.

Item: WC.....\$17.69



Ratchet Handle

Use handle with end tighteners and spoolers to tension Flex Fence®. Handles are 15" long.

Item: RH.....\$24.98



Tensioner Handle

Use to apply tension to fence rails. **Use with in-line & end post tensioners (pg. 41).**

Item: RTN.....\$4.95



Fence Pliers

These fence pliers are great for cutting soft wire, hammering staples with its flat head, and is able to pull staples.

Item: 10FP.....\$14.98

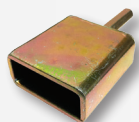


Barbed Staple Starter

Holds staples to start driving them into wooden posts.

Item: BSD.....\$12.50

Item: BSDW.....\$14.98



Ring Insulator Adapter

Used with hand drill for quick, easy installation. **Use with ring insulators (pg. 42).**

Item: DAIRI.....\$5.98



Ring Shank Nails

These ring shank nails have tremendous holding power.

Item: 5N (5", 20/lb).....\$4.98

Item: 35N (3.5", 37/lb).....\$6.98



Lag Bolt & Washer

Hot-dipped galvanized lag bolt with washer. Used to attach fence hardware to posts. **Item 385 is used with round corner brackets.**

Item: 385.....\$1.49

Item: 5LAGW.....\$1.99



Stainless Steel Insulator Screws

Rust-proof screws used for attaching insulators and tensioners to posts. They are a Phillips pan head. They have a rounded head to help protect your horses if they were to rub against your fencing insulators and screws.

Item: S16 (1/2").....\$3.98

Item: I16 (3/4").....\$5.48

Item: W16 (1 1/2").....\$5.98



2 1/2" Galvanized Insulator Screws

For attaching roller insulators (pg. 42) to posts. 1/4" hex head for easy installation. **Pack of 50.**

Item: EBS25.....\$14.99



Barbed Staples

1.5" staples are for use with mesh. Class 3 galvanized. 2" wide has extra width to accommodate the insulator tubing and coated wire. **Sold in increments of 1 lb.**

Item: BS1 (1.5").....\$2.34

Item: BS2W (2").....\$2.98

Use with ElectroBraid™

Use with Pro-Tek Tape

Use with Pro-Tek Braid/Rope

Use with Shockline

Use with Raceline



Gate Accessories



Electric Gate Handle

Bungee style handle safer for horses & all livestock. Adjust up to 20'. Use with wood or T-posts. Highly visible & effective. Includes 1 bungee cord with gate handle, 2 wood post insulators with nails, 2 T-post insulators & 2 anchor/activators.

Item: ERG.....**\$24.98**



Horse Gate Kit

Spring gate handle is a complete set of components for a safer 15'-20' electric horse gate. Hardware only.

Item: EBGATE.....**\$18.98**



Electric Tape Gate Kit

Enter & exit your electric fence paddocks. Includes 20' of tape, tensioners, & screws. *Comes in white, black, or brown.

Item: R22*.....**\$22.98**



Electric Gate Handle

Easy installation for electric tape gates. Can be adjusted up to 20' with electric tape. For use with our 1½" electric tape fencing. *Comes in white or black.

Item: R12*.....**\$6.98**

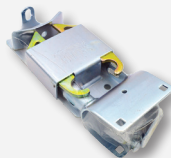
Use with ElectroBraid™

Use with Pro-Tek Tape

Use with Pro-Tek Braid/Rope

Use with Shockline

Use with Raceline



2-Way Locking Latch

This heavy duty latch prevents gates from sagging. 2-way latches can be operated from horseback and accepts padlocks.

Item: 2175.....**\$21.73**



1-Way Locking Latch

Prevents gate from sagging and dragging on the ground. Accepts padlocks to help secure livestock and keep out unwanted visitors. Padlocks are sold separately.

Item: 2177.....**\$16.98**



Quick Chain Latch

Our quick chain latch opens with ease - one hand on horseback or off; wrapping around the post and gate, then hooks on itself.

Item: KLG.....**\$9.75**



2" Gate Hinge Hardware

This heavy-duty kit is made for 2" round tube gates. Connects fence gate to either wooden round or square end posts. Allow your round tube fence gate to swing in both directions for easy access.

Item: 2180.....**\$29.98**



Gate Anchor

The gate anchor is like having an extra pair of hands! This anchor keeps the gates in place while you are moving horses, cattle, or farm equipment through the gate opening. Can also help prevent gates from sagging.

Item: 2178.....**\$17.98**



Gate Wheel

Allow your fence gates to open smoothly without any effort with the gate wheel attached. It works with multiple sized round tube gates. The gate wheel does all the work and prevents gates from bottoming out.

Item: GW.....**\$16.98**



*SHOP EVEN MORE OF OUR QUALITY PRODUCTS
ONLINE, 24/7, AT WWW.RAMMFENCE.COM!*

PHOTO: STONE WALL SURPRISE & STELLA RUMANES
PHOTO COURTESY OF PLATINUM PERFORMANCE

Mesh Fencing



RAMM's Class-3 mesh wire horse fencing helps keep predators out while keeping your horses and livestock contained. Mesh horse fencing is also great if you have small pets and worry about them getting in or out of pastures or other enclosed areas.

Mesh wire horse fencing is much more effective than traditional high-tensile wire and board fencing systems. The closely spaced woven design helps prevent horses from "stepping through" or "walking down" the mesh fencing.

NON-CLIMB FROM

\$1.45/ft*

SKU: 2448(M,2D) | *Based on
MESH ONLY | 48" roll height

V-MESH FROM

\$2.87/ft*

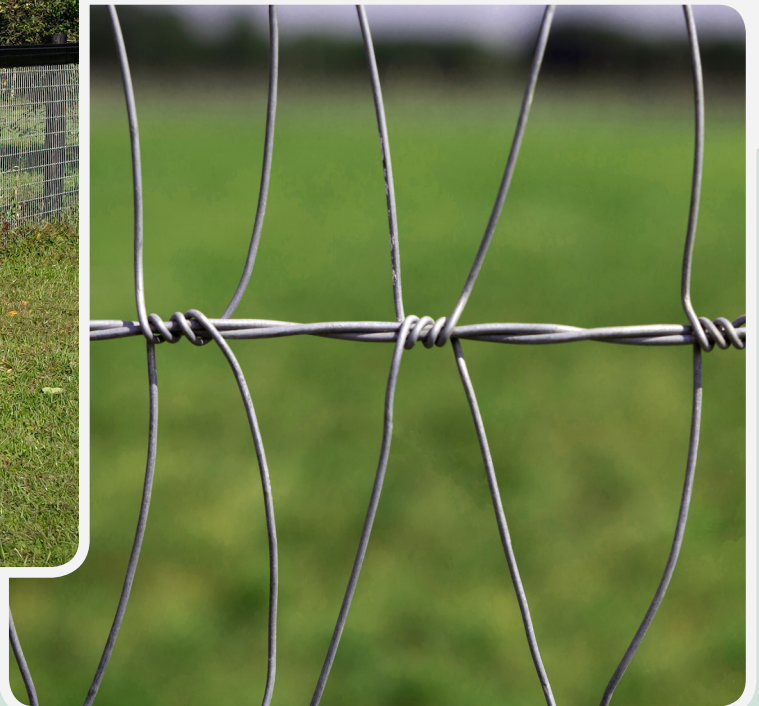
SKU: VM | *Based on
MESH ONLY | 50" roll height

*Visit rammfence.com for more
details and available options*

Non-Climb



V-Mesh



PVC Fence



This PVC Fence is agriculturally graded with white being the most popular color. In general, PVC is suggested for use in residential settings, but should be combined with electric fence. This fence comes in two, three, or four rail styles with matching gates available.

What does agriculturally-graded mean?

Our fence is thicker than most PVC sold for residential use; the posts have a 0.15" wall thickness and rails 0.09" wall thickness. Also included, impact modifiers make it up to **20% stronger** than the competition when it comes to impact resistance!

Will this PVC yellow over time? Our fence has a limited lifetime warranty which includes protection against excessive discoloration. 10 parts per 1000 of Titanium Dioxide are included in the vinyl to prevent UV damage.



FROM

\$6.98/ft*

SKU: PVC | *Based on
PARTS INCL. | 1000' of fence

Visit rammfence.com for more
details and available options

NOTE: Posts, post caps, routings, and rails are included with purchase of PVC. Other color options are available in white, tan, khaki, gray, or black.



A photograph of a horse stall. The stall has a wooden wall and a metal door with vertical bars. The door is partially open, revealing a bright outdoor area with trees and a paved walkway. The text "HORSE STALLS" is overlaid in the center.

HORSE STALLS

Stalls IOI

Below you can find a table outlining some of the most important aspects of each stall variety in our lineup. Some stall designs will require wood posts in your barn (post and beam construction), can be used in a clear-span barn, or even be freestanding stalls. See below to find out what options will work best for you and your barn.

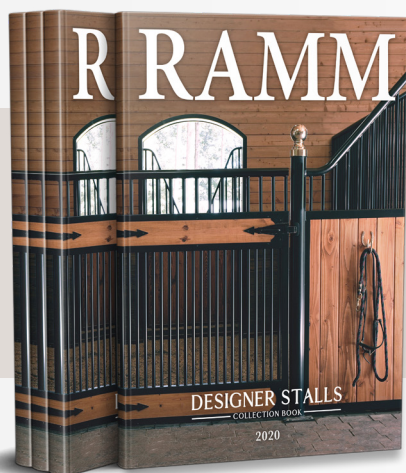
With so many options available today, selecting the best stalls for your horses can be confusing. Whether you need a quick and inexpensive option or an intricate, custom design...RAMM has a full line of stalls for you to choose from. Our equine knowledgeable staff will answer any questions you may have before, during, and after your purchase.

Key:	FO = Feed Opening	FG = Grill Top & Bottom	G/A = Pre-galvanized
	FD = Feed Door	FGV = V-Door & Grill Bottom	and/or Galvalume®
	LFD = Large Feed Door	M = Grilltop & Mesh Bottom	HDG = Hot-Dip Galvanized
	G = Grill Top	MV = V-Door & Mesh Bottom	PC = Powder Coated
	V = V-Door	FM = Mesh Top & Bottom	

Stall Series and Available Options

Style	Base Price 12' Stall Front	Req. Posts	Req. Concrete	Bar Space	Door Height	Track Options	Latch System	Feed Options	Door Options	Standard Finish
Derby	\$417.98	Yes	No	4"	86-3/4"	One Touch	Slide	FO	N/A	G/A
Essex	\$602.48	Yes	No	3-1/4"	86-3/4"	One Touch	Top Catch	FO, FD	G, V, FG, FGV	G/A
Cambridge	\$858.78	Yes	No	3-1/4"	81-3/8"	One Touch	Spring Bar	All	G, V, FG, FGV, M, MV	PC, HDG
Dublin	\$995.00	No	No	3-1/4"	86-3/4"	One Touch	Top Catch	All	G, V, FG, FGV, M, MV	HDG
Oxford	\$1,038.00	Yes	No	3-1/4"	79-1/2"	One Touch	Spring Bar	All	All	PC, HDG
Shetland	\$1,248.00	Yes	No	3-1/4"	57-1/2"	N/A	Plunger	N/A	N/A	PC

*Please call to inquire about quantity discounts. Many stalls in stock for fast delivery.



*LOOKING FOR SOMETHING
NEW & UNIQUE?
CALL 800.853.1611 & REQUEST OUR
DESIGNER STALLS COLLECTION BOOK!*

The Derby (Pro-Line Kit)



Our most economical stall series, the Derby, features high-quality, rust-protected, pre-galvanized steel for years of worry-free use. The door will be comprised of side channels, horizontal channels, and bars. All parts are pre-drilled. Grommets fit into the pre-punched channel holes, holding the bars in place, preventing rattling. **Optional feed opening available upon request.**

Beware of competitors offering look-alike products for less. Angle iron, flat stock, and lighter gauge steel are all lower quality materials that over time, will not hold up to daily use. RAMM uses U-channel construction throughout our kit stalls making them stronger and longer lasting. In addition to the Derby stall fronts, there are grilled, solid, and privacy partition kits available.

- 10' or 12' stall front
- Kit stall - assembly required
- All hardware & fasteners included, you just provide the wood
- 4" on-center bar spacing - 7/8" dia. bars
- Grillwork in 24" & 48" sections
- 51 $\frac{1}{8}$ " x 86 $\frac{3}{4}$ " door, pre-galvanized 16-ga bars with 14-ga channels
- 1-Year Warranty on workmanship

What is a "kit" stall?

Our kit stalls come to you unassembled. All parts are pre-drilled and the bar holes are pre-punched.

With easy-to-follow instructions, they are easy to assemble.

- 1 Door side channels
- 2 Pre-punched grill channels
- 3 UV-coated Galvalume® bars
- 4 Premium track system
- 5 Roller bearing round trolleys
- 6 Slide bolt latch (*item: SBL*)
- 7 Heavy-duty stay roller

NOTE: Screws are included. Buy wood for your stalls locally to save on freight costs.

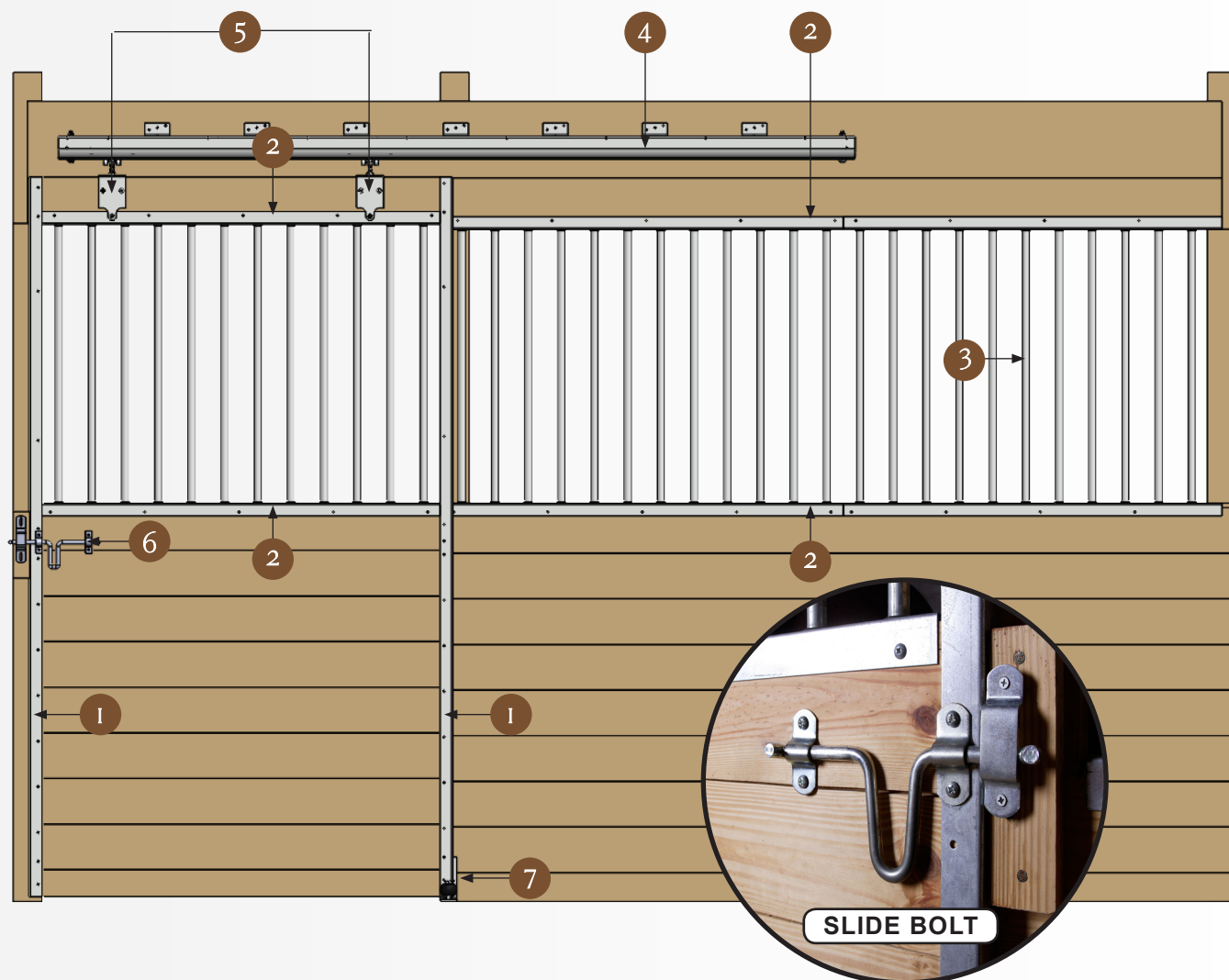


PRICES STARTING FROM

\$417.98

PER FRONT

Visit rammfence.com for more details and available options



The Essex (Standard Kit)

RAMM's Essex stalls are a great solution for many barns due to their versatile design and upgradeable options. **Available upgrades include a feed opening, swing out feed door, and several sliding door styles.**

When deciding what horse stall system you want for your horses, safety should be the number one priority. Our Essex stalls feature 14-ga galvanized, non-corrosive channeling, and 3¼" on center spacing between bars for added protection. Wood support posts are required for installation. Grill channels are pre-punched and pre-drilled for easier installation. In addition to the Essex stall fronts, there are grilled, solid, and privacy partition kits available.

- 10' or 12' stall front
- Kit stall - assembly required
- All hardware & fasteners included, you just provide the wood
- 3¼" on-center bar spacing - 7/8" dia bars
- Grillwork in 65" & 91" sections
- 51¼" x 86¾" door, pre-galvanized 16-ga bars with 14-ga channels
- 1-Year Warranty on workmanship

What is the Top Latch System?

The top latch has no parts that protrude into the door opening. Easy-to-use, the lifting rod is incorporated into the ergonomic door handle. The catch is located at the top of the door and functions as a slam latch.

- 1 Door side channels
- 2 Top door channel
- 3 Bottom door channel
- 4 Pre-punched grill channels
- 5 UV-coated Galvalume® bars
- 6 U-Channels for wood
- 7 Premium track system
- 8 Roller bearing round trolleys
- 9 Top latch catch
- 10 Ergonomic door handle (item: DLH)
- 11 Heavy-duty door stop (post-bumper)
- 12 Heavy-duty stay roller

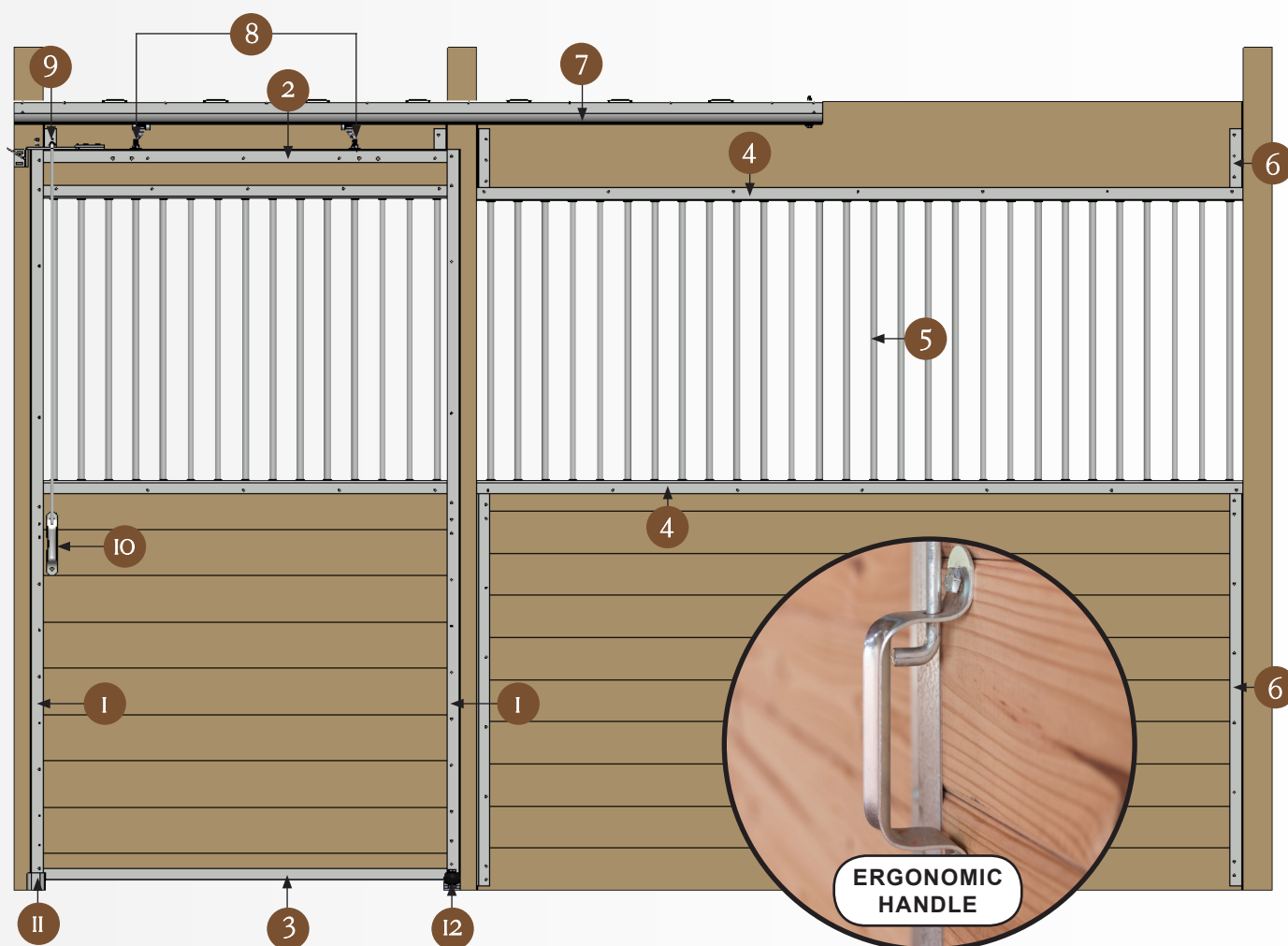


PRICES STARTING FROM

\$602.48
PER FRONT

Visit rammfence.com for more
details and available options

NOTE: Screws are included. Buy wood for
your stalls locally to save on freight costs.



Grillwork and Partition Kits Part I

RAMM's grillwork and partition kits are extremely versatile. Use the grillwork kits for your stall fronts or partitions. Grill kits are a quick and easy solution to provide more protection for your horses. Assembly is required. Everything needed for assembly is included within the kit, you just provide the wood.

Kit accessories include 7/8" diameter 16-ga bars with 3¼" spacing on-center as well as 14-ga channels. Grillwork is available in 24", 48", 65", 72", and 91". Below are our Derby and Essex grillwork and partition kit options. We are sure you can find an option to fit your farm and barn needs!

Derby Grillwork Kits

ITEM: 24GWPL - 24".....\$41.78

ITEM: 48GWPL - 48".....\$76.48

Derby Grilled Partition Kits

ITEM: PL10GP - 10'.....\$194.58

ITEM: PL12GP - 12'.....\$229.28

Derby Solid Partition Kit

ITEM: SKSP.....\$97.98

Derby Privacy Partition Kits

ITEM: PLPP48 - 48"Grill.....\$215.78

ITEM: PLPP72 - 72"Grill.....\$260.08

ITEM: PLPP96 - 96"Grill.....\$274.18

Essex Grillwork Kits

ITEM: 48GW - 48".....\$89.88

ITEM: 65GW - 65".....\$116.78

ITEM: 72GW - 72".....\$121.08

ITEM: 91GW - 91".....\$149.98

Essex Grilled Partition Kits

ITEM: SS10GP - 10'.....\$274.38

ITEM: SS12GP - 12'.....\$305.58

Essex Solid Partition Kit

ITEM: SKSP.....\$97.98

Essex Privacy Partition Kits

ITEM: SSPP48 - 48"Grill.....\$230.08

ITEM: SSPP65 - 65"Grill.....\$255.08

ITEM: SSPP72 - 72"Grill.....\$263.58

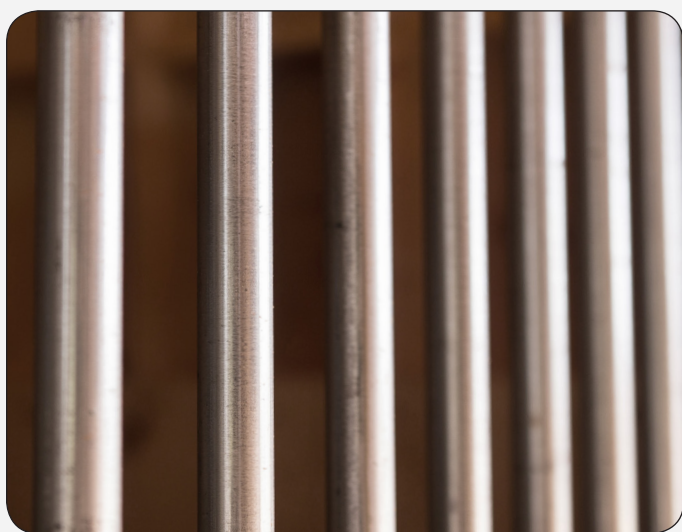
ITEM: SSPP91 - 91"Grill.....\$272.18

RAMM TIP

When purchasing your wood locally, you can save on freight costs. Visit our website at www.rammfence.com to find installation manuals providing you with proper wood dimensions.

Finish Options

RAMM is all about making your dream barn come true with hot-dip galvanized or powder coat finish options to choose from. A characteristic of hot-dip galvanization is that it is self-healing. A grey tone from oxidization also occurs overtime that will not compromise the finish.



Powder coat is long lasting and only requires maintenance if needed. Either finish will provide beauty to your barn. Below, you can find even more highlights of these options that are available to you at RAMM.

Hot-Dip Galvanization

A process of dipping steel in a vat of zinc. This is done after the steel has been welded, bent, cut, etc., and is in its final form. Hot-dip provides a much thicker layer of zinc (approx. 55µm) than pre-galvanization (approx. 13µm), therefore increases rust protection.

- Standard finish option for Cambridge, Oxford & Dublin
- Superior rust protection that will last for decades
- Slightly matte, industrial looking silver appearance
- Extremely durable and maintenance-free



Powder Coat

A process by which paint in a powder form is applied to metal. The parts are then cured in an oven to form a durable, seamless finish. Provides both color and rust inhibition to the surfaces.

- Standard finish option for Cambridge, Oxford & Shetland
- High-gloss black is standard, but a wide variety of colors are available
- Smooth, consistent appearance that coordinates with other barn finishes
- *Requires* maintenance when horses damage the coating

The Cambridge



Our customers requested a simpler, welded stall that would be powder coated or hot-dip galvanized. This is the perfect solution for those clients who want a more basic, yet functional stall. The Cambridge is a fully welded stall system at a competitive price point.

Featuring a sleek, black powder coat finish or a silver hot-dip galvanized finish. The Cambridge is a favorite for builders because of the easy installation. **Along with door options or feed options**, it has a redesigned spring-loaded latch bar with a stainless steel receiver. Close bar spacing, heavy duty door stop (post bumper), and our “One Touch” Premium track system are other great features of the Cambridge series.

- 10' or 12' stall front
- Fully welded door & grillwork
- All hardware & fasteners included, you just provide the wood
- 3¼" on center bar spacing - 7/8" dia bars
- Grillwork in 65" or 91"
- 51½" x 81⅜" door, 16-ga bars with 14-ga channels
- 1-Year Warranty on workmanship

What is the “One Touch” System?

This premium track is not round, but more of a tear drop shape. It has a square side allowing the track to be firmly and squarely mounted.

The round bottom profile allows for self-cleaning and self-aligning.

- 1 Fully welded door
- 2 Welded grillwork
- 3 "One Touch" premium track system
- 4 Roller bearing round trolleys
- 5 Stainless steel receiver
- 6 Spring loaded latch bar
- 7 Heavy-duty door stop (post bumper)
- 8 Heavy-duty stay roller

NOTE: Screws are included. Buy wood for your stalls locally to save on freight costs.

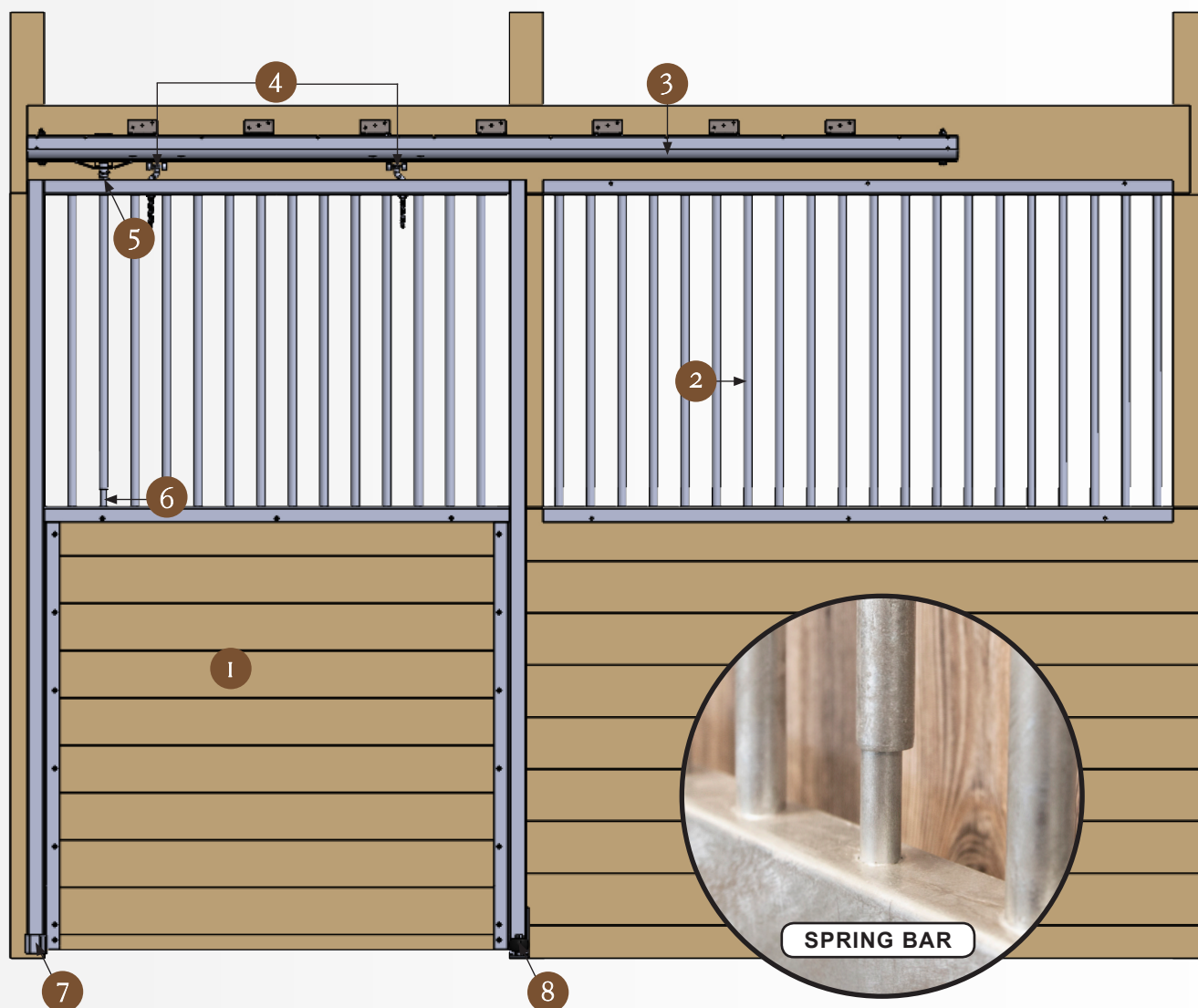


PRICES STARTING FROM

\$858.78

PER FRONT

Visit rammfence.com for more details and available options



The Dublin (Portable)



Dublin stalls are a freestanding portable horse stall system, but don't let the word "portable" make you think lightweight! These stall systems are very strong and can be used as both permanent or temporary equine stalls. Our customers rave about the quality of their Dublin stalls. These stalls do not need structural posts and are ideal for clear-span barns.

Dublin stalls and partitions can also be customized to meet your specifications. We stock basic 10' or 12' fronts and partitions for fast delivery, but can also work with custom sizes. With all hardware and fasteners included, all you have to provide is the wood.

- 10' & 12' hot-dip galvanized panels in stock; custom sizes available
- Fully welded frames, panels, & doors
- All hardware & fasteners included, you just provide the wood
- 3¼" on-center bar spacing - 7/8" dia bars
- 51½" x 79½" door, 16-ga bars with 14-ga channels
- Hot-dip galvanized available; custom powder coated finish option, but not stocked
- 1-Year Warranty on workmanship





PRICES STARTING FROM

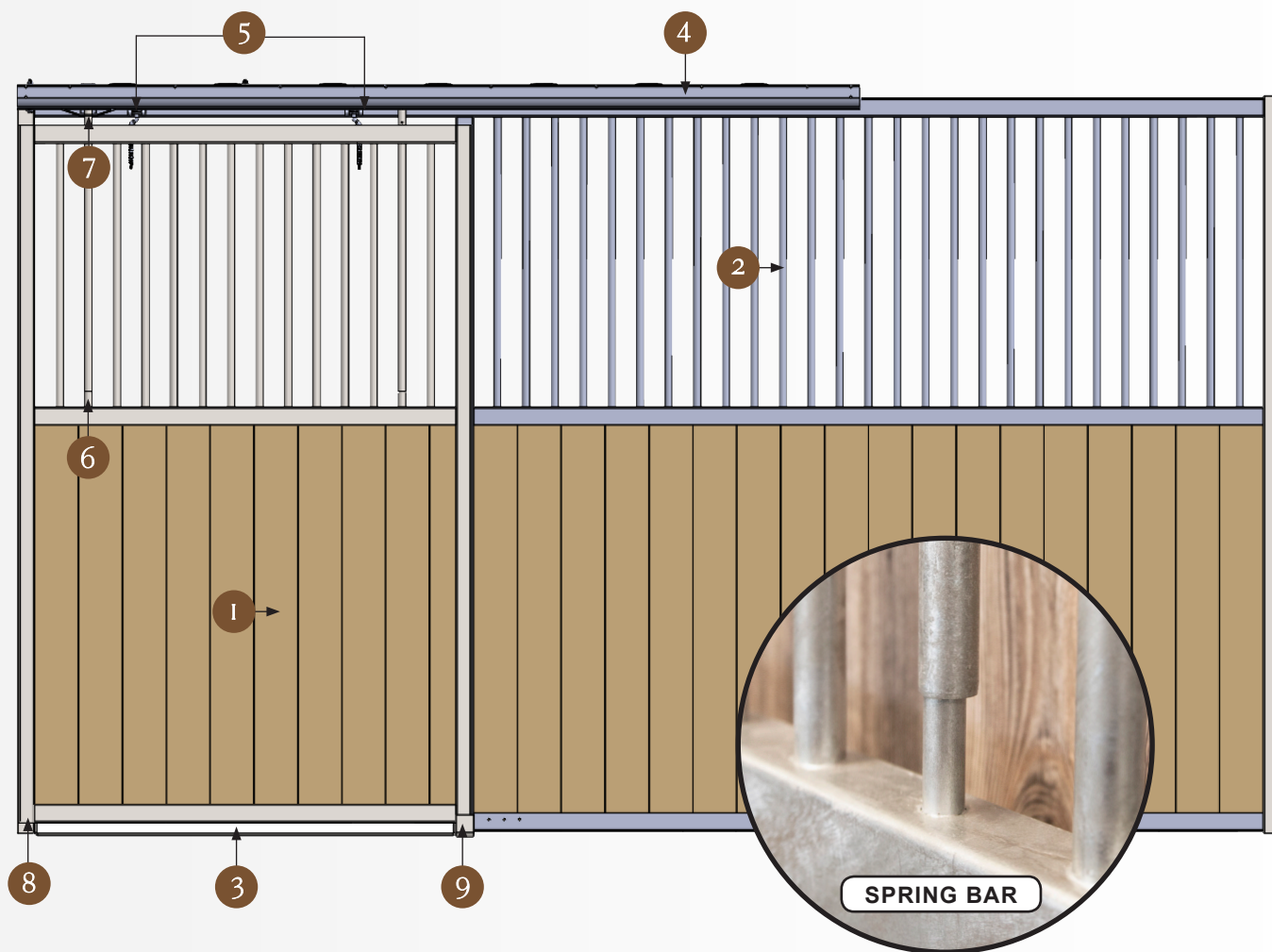
\$995.00

PER FRONT

Visit rammfence.com for more details and available options

- 1 Fully welded door
- 2 Fully welded frame
- 3 1/4" flat stock threshold
- 4 "One Touch" premium track system
- 5 Roller bearing round trolleys
- 6 Spring loaded bar latch
- 7 Stainless steel receiver
- 8 Heavy-duty integrated door stop
- 9 Heavy-duty integrated door guide

NOTE: Screws are included. Buy wood for your stalls locally to save on freight costs.



The Oxford (Welded)



Our Oxford welded horse stalls are built to be stronger and longer lasting. U-channels allow for your supplied wood to slide directly into the stall front for easier and faster construction.

Like the Cambridge, the Oxford features a welded door frame and grillwork. There are many trim and upgrade options available for the Oxford which provide a polished look and increased ventilation.

RAMM offers two quality finishes for this horse stall system: hot-dipped galvanized and powder coated black. **The upgrade options for our welded stalls include: feed doors, regular and oversize feed openings, gossip "V" doors and more.**

- 10' or 12' stall fronts
- Welded door & grillwork
- All hardware & fasteners included, you just provide the wood
- 3¼" on-center bar spacing - 7/8" dia bars
- 51¼" x 86¾" door, pre-galvanized 16-ga bars with 14-ga channels
- Hot-dip galvanized or powder coated finish available
- 1-Year Warranty on workmanship





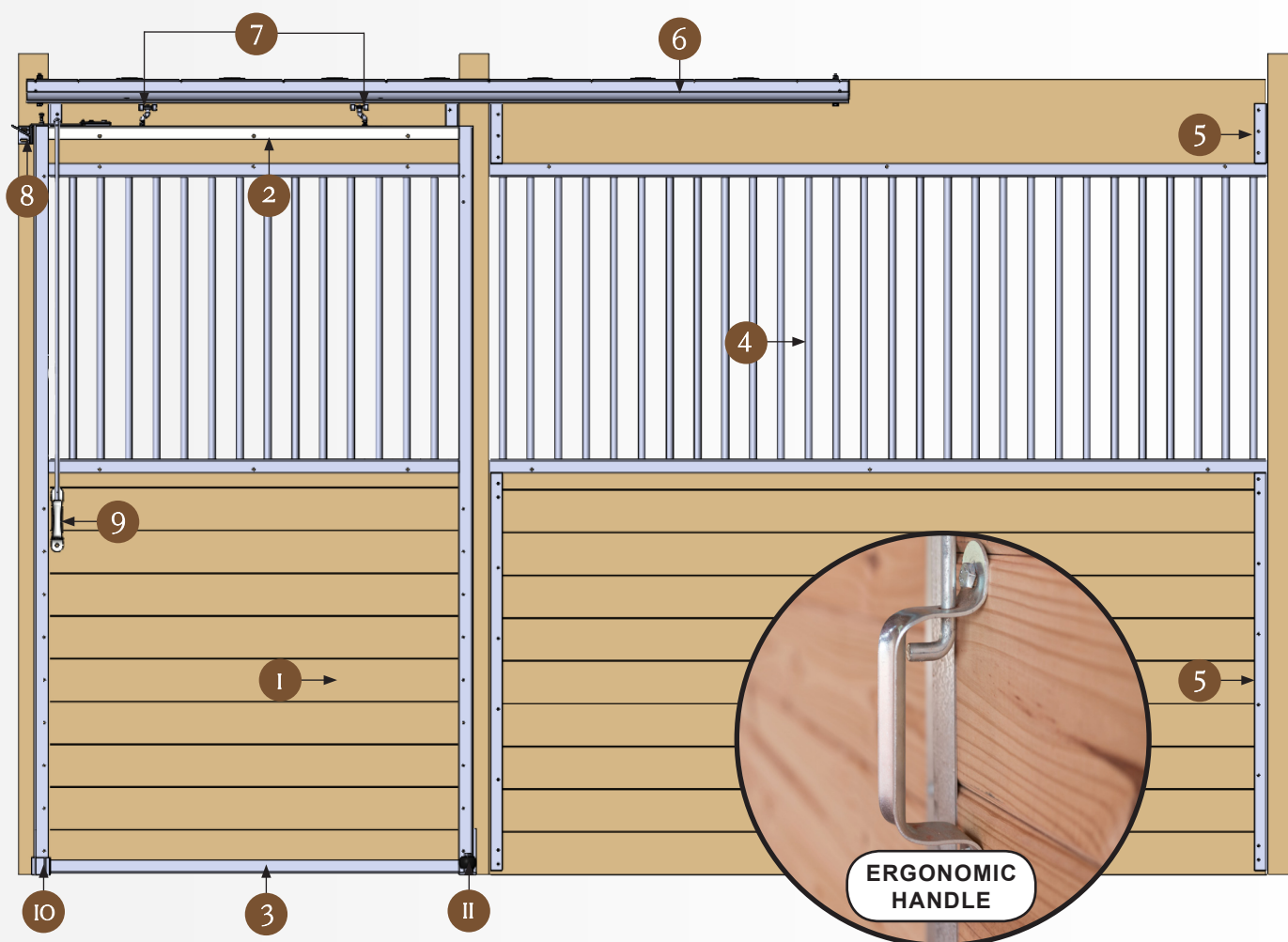
PRICES STARTING FROM

\$1038.00
PER FRONT

Visit rammfence.com for more
details and available options

- 1 Welded door
- 2 Top door channel
- 3 Bottom door channel
- 4 Welded grillwork
- 5 U-channels for wood
- 6 "One Touch" premium track system
- 7 Roller bearing round trolleys
- 8 Top latch catch
- 9 Ergonomic door handle (item: DLH)
- 10 Heavy-duty door stop (post bumper)
- 11 Heavy-duty stay roller

NOTE: Screws are included. Buy wood for
your stalls locally to save on freight costs.



Grillwork and Partition Kits Part 2

RAMM's grillwork and partition kits are extremely versatile. Use the grillwork kits for your stall fronts or partitions. Grill kits are a quick and easy solution to provide more protection for your horses. Assembly is required. Everything needed for assembly is included within the kit, you just provide the wood.

Kit accessories include 7/8" diameter 16-ga bars with 3¼" spacing on-center as well as 14-ga channels. Grillwork is available in 48", 65", 72", and 91". Below are our Oxford and Cambridge grillwork and partition kit options. We are sure you can find an option to fit your farm and barn needs!

Grillwork Kits - Hot-Dip Galvanized *(screws not included)*

ITEM: 48GWW - 48".....	\$188.00
ITEM: 65GWW - 65".....	\$228.00
ITEM: 65GWFD - 65" <i>(feed door not included)</i>	\$288.00
ITEM: 65GWFO - 65".....	\$256.00
ITEM: 65GWLFD - 65" <i>(feed door not included)</i> ..	\$228.00

ITEM: 72GWW - 72".....	\$248.00
ITEM: 91GWW - 91".....	\$298.00
ITEM: 91GWFD - 91" <i>(feed door not included)</i>	\$298.00
ITEM: 91GWFO - 91".....	\$326.00
ITEM: 91GWLFD - 91" <i>(feed door not included)</i> ..	\$298.00

Grillwork Kits - Powder Coated Black *(screws not included)*

ITEM: 48GWB - 48".....	\$188.00
ITEM: 65GWB - 65".....	\$228.00
ITEM: 65GWFDDB - 65" <i>(feed door not included)</i> ..	\$288.00
ITEM: 65GWFOB - 65".....	\$256.00
ITEM: 65GWLFDDB - 65" <i>(feed door not included)</i> ..	\$228.00

ITEM: 72GWB - 72".....	\$248.00
ITEM: 91GWB - 91".....	\$298.00
ITEM: 91GWFDDB - 91" <i>(feed door not included)</i> ..	\$298.00
ITEM: 91GWFOB - 91".....	\$326.00
ITEM: 91GWLFDDB - 91" <i>(feed door not included)</i> ..	\$298.00

Solid Partition Kits *(screws included)*

ITEM: SKSP.....	\$97.98
-----------------	----------------

ITEM: SKSPB.....	\$148.00
------------------	-----------------

Grilled Partition Kits *(screws included)*

ITEM: WW10GP - 10'.....	\$458.00
ITEM: WW12GP - 12'.....	\$528.00

ITEM: WB10GP - 10'.....	\$498.00
ITEM: WB12GP - 12'.....	\$568.00

Privacy Partition Kits

ITEM: WWPP48 - 48" Grill.....	\$340.98
ITEM: WWPP65 - 65" Grill.....	\$317.58
ITEM: WWPP72 - 72" Grill.....	\$405.48
ITEM: WWPP91 - 91" Grill.....	\$472.18

ITEM: WBPP48 - 48" Grill.....	\$449.98
ITEM: WBPP65 - 65" Grill.....	\$461.68
ITEM: WBPP72 - 72" Grill.....	\$477.78
ITEM: WBPP91 - 91" Grill.....	\$509.18

Stall Window Grills

Window grills are a great addition to any horse stall that has or will eventually have windows. These grills allow for better ventilation, let in more light, and help protect your windows from your horses' kicking or knocking into them. This alleviates most

possibilities of injuries pertaining to windows. Nothing is worse than an unexpected vet visit or house call. Below, you can find stall window grill options that are sure to provide your barn with the safety and quality you need!

Window Grill Kits (3½" on-center bar spacing)

ITEM: 3624WG - 36"W x 24"H.....	\$84.00
ITEM: 2436WG - 24"W x 36"H.....	\$104.00
ITEM: 3236WG - 32"W x 36"H.....	\$118.00

ITEM: 3636WG - 36"W x 36"H.....	\$124.00
ITEM: 3648WG - 36"W x 48"H.....	\$132.00
ITEM: 4836WG - 48"W x 36"H.....	\$138.00
ITEM: 4848WG - 48"W x 48"H.....	\$148.00

NOTE: Welded & hinged window grills both have 3¼" on center bar spacing. Furthermore, we do not stock either option as they are built to each individual customers rough opening.

Welded Window Grills (hot-dip galvanized)

ITEM: 3236WGW - 32"W x 36"H.....	\$272.00
ITEM: 2436WGW - 24"W x 36"H.....	\$258.00
ITEM: 2448WGW - 24"W x 48"H.....	\$278.00
ITEM: 3624WGW - 36"W x 24"H.....	\$278.00
ITEM: 3636WGW - 36"W x 36"H.....	\$318.00
ITEM: 3648WGW - 36"W x 48"H.....	\$328.00
ITEM: 4836WGW - 48"W x 36"H.....	\$348.00
ITEM: 4848WGW - 48"W x 48"H.....	\$368.00

Welded Hinged Grills (hot-dip galvanized)

ITEM: 3236WGH - 32"W x 36"H.....	\$358.00
ITEM: 2436WGH - 24"W x 36"H.....	\$358.00
ITEM: 2448WGH - 24"W x 48"H.....	\$388.00
ITEM: 3624WGH - 36"W x 24"H.....	\$368.00
ITEM: 3636WGH - 36"W x 36"H.....	\$398.00
ITEM: 3648WGH - 36"W x 48"H.....	\$428.00
ITEM: 4836WGH - 48"W x 36"H.....	\$428.00
ITEM: 4848WGH - 48"W x 48"H.....	\$438.00

Welded Window Grills (powder coated black)

ITEM: 3236WGB - 32"W x 36"H.....	\$258.00
ITEM: 2436WGB - 24"W x 36"H.....	\$248.00
ITEM: 2448WGB - 24"W x 48"H.....	\$268.00
ITEM: 3624WGB - 36"W x 24"H.....	\$268.00
ITEM: 3636WGB - 36"W x 36"H.....	\$298.00
ITEM: 3648WGB - 36"W x 48"H.....	\$318.00
ITEM: 4836WGB - 48"W x 36"H.....	\$328.00
ITEM: 4848WGB - 48"W x 48"H.....	\$348.00

Welded Hinged Grills (powder coated black)

ITEM: 3236WGHB - 32"W x 36"H.....	\$338.00
ITEM: 2436WGHB - 24"W x 36"H.....	\$338.00
ITEM: 2448WGHB - 24"W x 48"H.....	\$358.00
ITEM: 3624WGHB - 36"W x 24"H.....	\$348.00
ITEM: 3636WGHB - 36"W x 36"H.....	\$368.00
ITEM: 3648WGHB - 36"W x 48"H.....	\$378.00
ITEM: 4836WGHB - 48"W x 36"H.....	\$388.00
ITEM: 4848WGHB - 48"W x 48"H.....	\$398.00





Jason W.

Aside from their great looks, I chose the Welded stalls first and foremost because of their tremendous durability. As a horse trainer, I need strong stalls to withstand some horses and these stalls do just that.

The Shetland (Tuscany Kit)



The Shetland kit features many of the same benefits as our Designer Tuscany line, but at an economical price. It is a European style kit stall that uses your wooden support posts. It has a design that provides beauty, safety, and function.

The grillwork is designed to be cut down on-site if needed for a custom fit. The door height provides an open feel to any barn. Similar to our Oxford series, U-channels are provided to install your wood between the barn's existing wooden door and end posts. Custom brackets secure the Shetland grill section and fully adjustable door hinges ensure a proper fit and swing.

- One size fits up to 12' - in stock
- Welded door & grillwork
- All hardware included, you just provide the wood
- 3¼" on-center bar spacing - 7/8" dia bars
- Grillwork is 42¼" wide, door is 47" x 57½", 16-ga bars
- Durable black powder coat finish
- 1-Year Warranty on workmanship



- 1 Welded door frame
- 2 Plunger latch kit
- 3 Welded Euro grillwork
- 4 U-channels for wood
- 5 Adjustable door hinges
- 6 Grillwork connectors

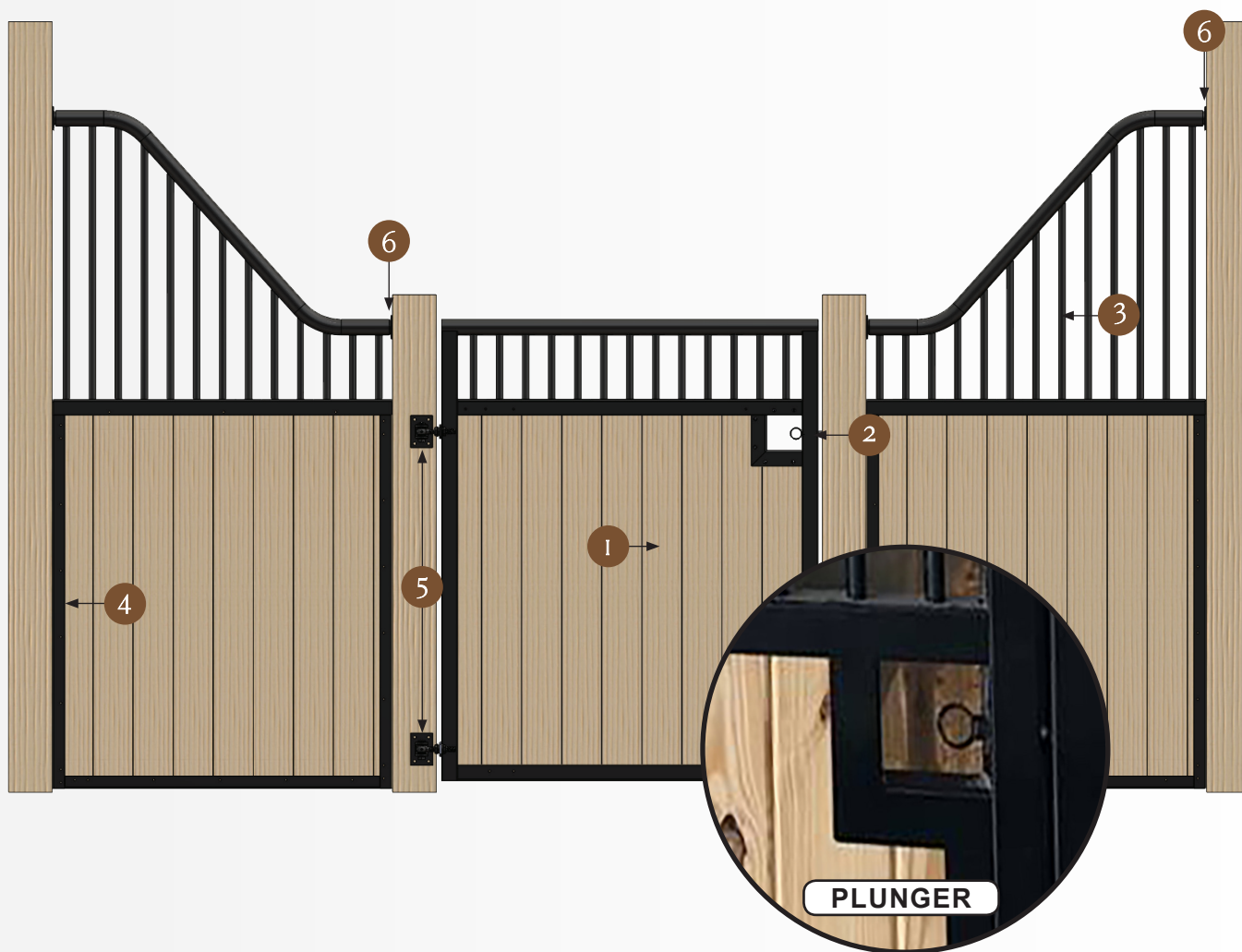
NOTE: Screws are included. Buy wood for your stalls locally to save on freight costs.



PRICES STARTING FROM

\$1248.00
PER FRONT

Visit rammfence.com for more details and available options







Valerie P., WI

RAMM helped make my dream farm a reality! In addition to their unbeatable customer service and reasonable pricing, I chose RAMM because of their resistance to rust, sleek look, and horse-proof latches! I also appreciate that it is family owned with products made in the U.S.A. and employees that genuinely care.

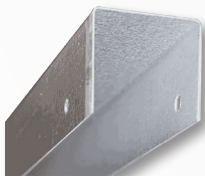
Stall Hardware



U-Channel

Installed between posts. Allows you to slide wall boards in place. Have pre-drilled holes and feature a rust-resistant galvalume coating.

Item: 7U.....	\$4.48
Item: 7UB.....	\$11.98
Item: 46U.....	\$13.58
Item: 46UB.....	\$29.98
Item: 94U.....	\$25.38
Item: 94UB.....	\$42.98



Wall Capping

93.5" galvanized wall capping slides over exposed stall boards to prevent cribbing. No more rough or jagged wooden edges from horses that chew.

Item: WC8	\$13.98
Item: WCB	\$19.98



Wall Brace

Add extra durability and strength to stall walls with this brace. Pre-drilled holes, makes installation faster. Lays flat against the stall wall once secured in place, helping to prevent injury to your horses.

Item: 46W.....	\$9.48
Item: 46WB.....	\$19.98
Item: 94W.....	\$16.88
Item: 94WB.....	\$37.98



Post Edging

Cover your stall posts and prevent cribbing. Protects wood edges that your horse may chew. 93.5" edging.

Item: PE	\$9.98
Item: PEB.....	\$23.98



Stall Screws

Used with all stall systems, the #12 - 1.25" long screws are used for attaching stall channeling to wooden stall posts and boards. **Sold in packs of 50.**

Item: SS1.....	\$6.98
Item: SS1B.....	\$9.95



Horse Stall Grill Bar

These 16-gauge, 7/8" diameter horse stall grill bars used with kit stalls. Can be easily removed from grill work channeling, allowing you to customize your stalls.

Item: BAR34	\$3.08
-------------------	---------------



Horse Stall Grommets

Placed in between the grill channels and horse stall grill bars. Made of a heavy-grade plastic, designed to keep the bars in place and stop them from rattling. **Sold in packs of 50.**

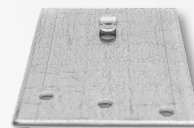
Item: GRO1	\$9.98
------------------	---------------



One Touch Track

For easy, smooth stall door opening. Heavy duty galvanized steel, track is self cleaning. Holds up to 600lbs. Available in 8'. Galvanized or powder coated.

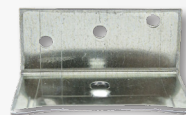
Item: 8RT.....	\$39.48
Item: 8RTB	\$54.98



Premium Track Top Mount Bracket

Essex & Welded stalls only. Key component when installing Premium tracks to your horse stalls. **Sold individually.**

Item: RTTMBEX.....	\$6.08
--------------------	---------------



Premium Track Front Mount Bracket

Derby & Cambridge stalls only. Key stall component when installing Premium tracks to your horse stalls. **Sold individually.**

Item: RTSB	\$2.78
------------------	---------------



Premium Track Flush Mount Top Mount Bracket

Use with Dublin stalls only. Add Premium track flush mount, top mounting brackets to support your 8' Premium track in place, in turn, holding up your sliding stall door. **Sold individually.**

Item: RTTMB.....	\$5.00
------------------	---------------

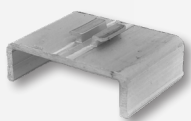


Premium Track End Cap

Help keep sliding stall door track as clean possible. Prevent critters like birds and mice from entering the track.

Item: RTEC.....\$1.98

Item: RTECB.....\$3.98



Premium Track Splice Clip

Connects two 8' Premium tracks together to form one, 16' Premium track system. Great piece for assembling long sliding barn doors and is made to last!

Item: PTSC.....\$8.08



Premium Track Bracket Screw

Used to attach the Premium track brackets to your horse stall. They are only compatible with the Premium track brackets. **Sold individually.**

Item: SS2.....\$0.08



Premium Track Latch Catch Bracket

Cambridge & Dublin stalls only. Works with our Premium track system. When you guide your sliding stall door shut, the door latch will slide into the catch bracket – now your door is in a closed and secure position.

Item: RTLCB.....\$25.00



90° Premium Track Trolley Bracket Kit

Come as a pair and are installed to the front of your stall door. Used to hang a solid sliding stall door from our 8' Premium self-cleaning track. **Sold as a pair.**

Item: RTT90.....\$55.68/Pair



Premium Track Trolley

Used for hand sliding stall doors from our 8' Premium track. Stall doors then slide smoothly and quietly in front of the horse stall. Features a heavy-duty galvanized construction with nylon wheels. **Sold individually.**

Item: RTTO.....\$27.98



Premium Offset Trolley Bolt

Connects premium track trolleys to your sliding door track system. The trolley bolt goes through the top of the stall door and suspends the door.

Item: OTB129.....\$2.78



Adjustable Stay Roller

Made from galvanized steel and comes with a 2" non-marking plastic guide wheel. Will keep your stall door from swinging out. A must for safety.

Item: ASR.....\$19.98

Item: ASRK (kit).....\$23.28

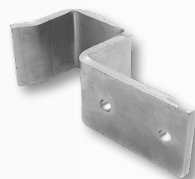


Stay Roller

Made from an all galvanized steel construction with a heavy black plastic guide wheel. Will not chip, rust or mark your stall door. Keeps the bottom of your stall door from swinging.

Item: SR.....\$15.88

Item: SRB.....\$14.98

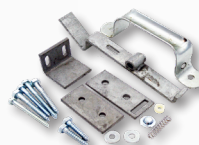


Post Bumper

Made of heavy-duty solid steel and is compatible with doors that are up to 1½" thick. It will keep sliding doors tight to the stall front and won't allow them to swing outward while in the closed position. A must for safety.

Item: PB.....\$9.78

Item: PBB.....\$14.98



Top Door Latch System

Essex & Oxford stalls only. Makes sure your sliding stall door stays secure and closed. The latch is self-locking, so when the door is fully closed it will stay closed. Made of heavy-duty galvanized steel. As always follow mfg. instructions for installation.

Item: DLK (long lifting rod).....\$48.88

Item: DLKB (long lifting rod).....\$54.28

Item: DLSK (short lifting rod).....\$49.38

Item: DLSKB (short lifting rod).....\$64.28

HARDWARE CONTINUED ON NEXT PAGE »

Stall Hardware



Lifting Rod

Connects the handle on the door to the **top latch assembly** on the top of the door. Allows for a simple one-handed operation and a well-secured door.

Item: LR.....	\$15.78
Item: LRB.....	\$24.99
Item: LRFGD.....	\$16.28
Item: LRFGDB.....	\$24.99



Door Latch Handle

Made from a heavy-duty galvanized steel and is excellent for large sliding doors. Is included in our top door latch kit for some of our horse stalls and the barn door hardware kit.

Item: DLH.....	\$11.35
Item: DLHB.....	\$12.35



Thumb Latch

Zinc-plated for superior strength. Can be used for doors that are 1 $\frac{3}{4}$ " - 2 $\frac{3}{4}$ " thick. Enables you to open your doors from either side.

Item: DLT.....	\$99.00
----------------	----------------



Barn Door Handle

Made of cast iron and comes in a smooth powder-coated black finish for excellent resiliency. Mounts to any flat surface and works great for horse stalls, arenas, barn or bale doors.

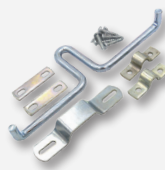
Item: DLBH.....	\$9.50
-----------------	---------------



Heavy-Duty Door Handle

RAMM's 9" x 1 $\frac{1}{2}$ " heavy-duty door handle is excellent for large sliding doors. You can have your handle's finish be hot-dip galvanized or powder coated black over a hot-dip galvanized finish to fit your barn style!

Item: HDDHB.....	\$20.00
Item: HDDHG.....	\$22.00



Slide Bolt Latch

Zinc plated latch. Use on sliding or swinging doors. Can be used for right or left handed applications. 10" long x 3 $\frac{1}{2}$ " high.

Item: SBL.....	\$12.98
----------------	----------------



Locking Style Horseshoe Latch

Aesthetically pleasing and functional, this locking style horseshoe latch is compatible with sliding stall doors or hinged doors. It's not compatible on a Dutch door or flush-close door.

Item: LHLG.....	\$59.00
Item: LHLL.....	\$62.00



Horseshoe Style Blanket Bar

Stylish and elegant, features a horseshoe design to give your track room or stalls an extra added touch of class. Holds heavy rugs, coolers, sheets, saddle pads and more.

Item: BBHSB.....	\$48.98
------------------	----------------



Folding Blanket Bar

Lays flat against the wall or in an open position to accept your blankets. 9/16" diameter bar measures 40 $\frac{1}{2}$ " long. Attach to your stall front or wall with four 1/2" screws.

Item: BB.....	\$32.98
---------------	----------------



Pail Safe Bucket Holder

Virtually horse proof. Use with any flat-back bucket. Black only. Bucket sold separately. Screws are included.

Item: PSB.....	\$24.98
----------------	----------------



Swing-Out Bucket Door

Save time with this steel bucket door. Install onto stall front and no longer go in and out to water your horses. (Purchase bucket holder and mount on inside of bucket door).

Item: SBHD.....\$119.00

Item: SBHDB.....\$149.00

NOTE: CUSTOM COLORS AVAILABLE AT REQUEST



Poly Insulated Bucket Holder

Helps to keep the ice at bay in winter and keep water cooler in the summer. Can be added onto swing-out bucket door. Floater top included. (In winter, daily refill whole bucket to avoid ice).

Item: PHSW.....\$94.00



Flexible Stall Waterer

Still hauling water buckets and heavy hoses around? This flexible horse stall waterer is fully automatic and designed with smooth, round edges with horses' safety in mind. **(Non-heated)**.

Item: FHW.....\$69.00



Push Paddle Stall Waterer

Made of plastic with brass valves, the design prevents wasting water and the bowl from gathering build-up and dirt. Horses push on paddle for water on demand. **(Non-heated)**.

Item: LHR.....\$89.00



Automatic Stall Waterer

Can mount on stall walls. Removable drain plugs for easy cleaning. Made of heavy-duty polyethylene. Provides clean fresh water to your horses. **(Heated)**.

Item: ASWH.....\$223.00



Aluminum Feeder - Straight Mount

Our new grain feeder is constructed of aluminum and has round edges for your horses' safety. This feeder mounts on a flat wall. Not intended for overly abusive horses.

Item: AFS.....\$88.90



Aluminum Feeder - Corner Mount

Our new grain feeder is constructed of aluminum and has round edges for your horses' safety. This horse grain feeder mounts in the corner of your stall wall. Not intended for overly abusive horses.

Item: AFC.....\$88.90



Poly Corner Grain Feeder

The poly corner horse stall feeder has very smooth, round edges to prevent your horses from being injured. It also helps to prevent horses from throwing, pushing, or spilling their feed with it's round bowl shape.

Item: PHGF.....\$23.00

FEATURED ON THE OFFICIAL MARTHA STEWART BLOG!

SCAN WITH A QR READER TO VIEW HER BLOG POST »



Galvanized Wall Mounted Feeder

This dual-purpose galvanized feeder can be mounted on any flat surface for a proper feeding height. Included in the kit are detailed instructions and all the hardware needed for easy assembly!

Item: WFHR.....\$188.00

*SHOP MORE QUALITY
PRODUCTS ONLINE, 24/7, AT
WWW.RAMMFENCE.COM!*



FARM & BARN

Dutch Doors



(SKU: DUTCHDR) Dutch doors add much-needed ventilation and socialization for your horses and other animals. Our Dutch doors are offered in a variety of sizes and colors. These doors are manufactured with galvalume steel and have a powder coat finish.

To provide a tighter fit and to prevent sagging, these high-quality Dutch doors come pre-hung with T-hinges. T-hinges are great for keeping the weather out and the animals comfortable!

Bale Doors



(SKU: BALEDNR) Our bale doors are available in two standard sizes and in many different powder coat colors to match your existing barn or doors. They are manufactured from a single piece of galvalume steel, laser-cut to design, with no weld burrs. Bale doors add much-needed ventilation and socialization for your horses, livestock, and other animals.

NOTE: There is a difference in the way builders will build a door jamb for a house and the way you need to build a door jamb for a barn. Here are some helpful tips:

- Wood all the way around the jamb
- Need at least 3" of wood on the face of the door jamb to accept the door
- Use at least 2x6" boards; 2x4" boards will not give you enough surface to screw to
- If the barn is going to have wood siding, put the siding on first – then the doors
- If the barn is going to have metal siding, put the doors on first – then the metal siding

Dutch Door

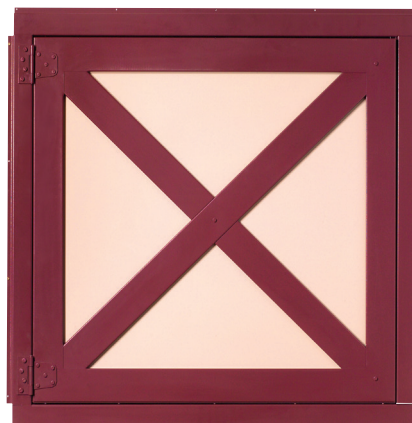


Available in standard sizes:

4'x7' or 4'x8'

(Custom options upon request!)

Bale Door



Available in standard sizes:

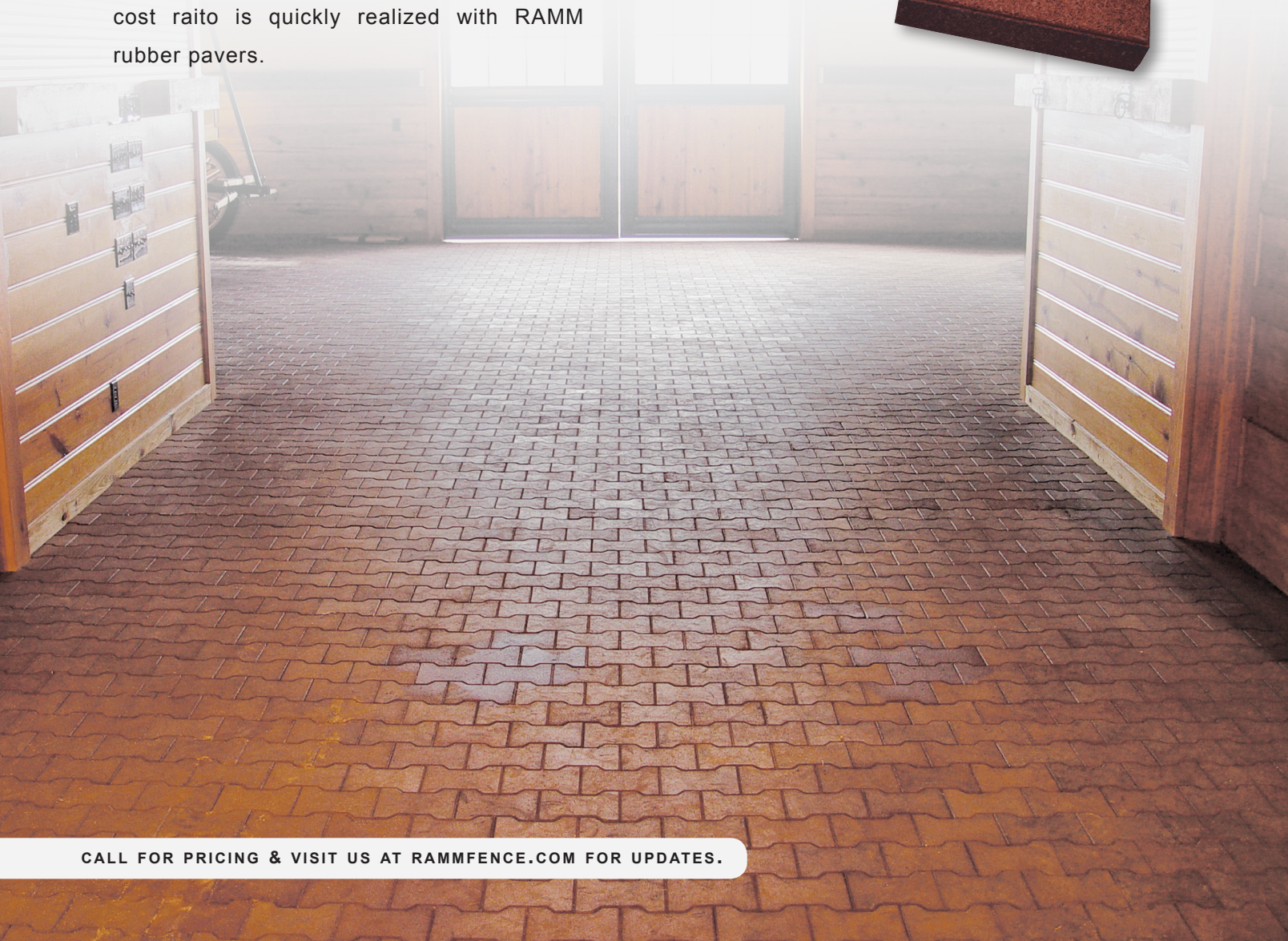
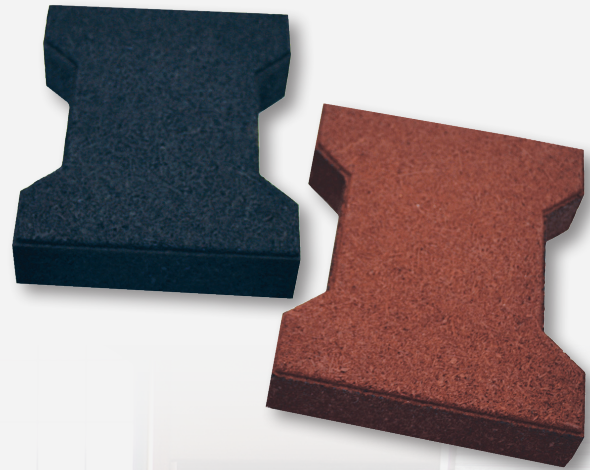
4'x3'6" or 4'x4'

(Custom options upon request!)

Rubber Pavers

(SKU: PAVER) Not all pavers are created equal. Base materials greatly affect the longevity of the product. Buffings are the preferred base for rubber pavers as they provide a greater surface area for the binding glue. Rubber buffings are fine shreds, while crumb rubber is similar to a small pebble. All glue used on and in pavers should be UV-stabilized so that it does not break down in sunlight. Unlike other pavers that are only surface colored, our pavers are equally colored inside and out. These important details make our pavers the most inexpensive option on the market. However, the benefit-cost ratio is quickly realized with RAMM rubber pavers.

Available in black or terracotta, our Rubber Pavers come in a 1½" (40mm) or ¾" (20mm) thickness. The 1½" pavers can be installed over gravel or concrete. The ¾" requires adhesive for concrete.



Stall Mats

RAMM stall mats are versatile and can be used for stalls, trailers, aisles, and wash stalls. Stall mats reduce bedding usage, make stalls faster and easier to clean, and reduce fatigue when used over concrete floors. RAMM stall mats also help to prevent horses from digging. Install over leveled dirt or compacted stone.

(SKU: 33WM) Wash mats provide excellent drainage and a safer, non-slip surface. Wash mats measure 3' x 3' x 1/2".

(SKU: SMIKIT) Interlocking mats come in standard kit sizes, but custom dimensions are available. Interlocking mats are the most popular option; they can be economically configured for barn aisles. Stall mats are 3/4" thick vulcanized rubber.

(SKU: 46SM) Punter top mats are a durable and economical solution. These mats are 3/4" thick and made from vulcanized rubber. A standard in better stalling for horses.

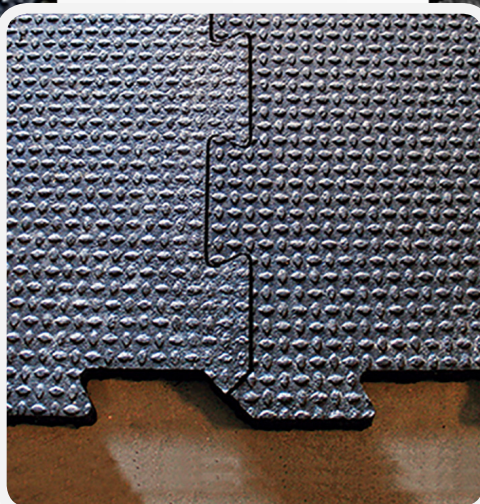
NOTE: Mat thickness may vary slightly.

HAVING DIFFICULTY MOVING MATS?



Ask about our EZ Grip mat movers! Sold as a pair, these movers make it simple to grab and move around heavy mats at will **(SKU: MM)**.

Wash Mats



Interlocking Mats

Punter Top Mats



ThuroBed Mattress

(SKU: SC) ThuroBed horse mattress systems provide a healthier living environment for your horses. They have a resilient, forgiving surface (which mimics the pasture) and comes with a non-slip surface for improved comfort and traction. This one-piece, non-permeable top cover prevents urine from soaking through; only a small amount of bedding is needed to absorb wet spots.

Why ThuroBed? This mattress system provides insulation from the cold and a barrier against dampness from concrete floors. The ThuroBed is equivalent to 4"-8" of bedding comfort. Sewn cells keep shredded rubber mattress even over time.

This system has also been linked to reducing hock sores and joint issues. It saves time spent mucking stalls and reduces bedding up to 75% over other systems. Used for rehabilitation and therapy facilities, sport and competitive horses, as well as older horses and foaling. ThuroBed mattress can be hosed off with some water. It can also be disinfected with a 5% diluted bleach solution. **Do not use a power washer to clean the top cover.**

1. Heavy-duty fastening strips keep the top cover secure
2. The rubber impregnated top cover is impermeable to moisture
3. 45" x 66" rubber crumb-filled mattresses create the bottom layer of this system



Add a foam insert to ThuroBed to upgrade to our premium system!



SCAN WITH YOUR MOBILE
DEVICE'S QR READER TO
VIEW OUR THUROBED ARTICLE.



Fans & Ventilation

Most basket and ceiling fans are not designed for outside use. Our line of agriculturally-rated, UL507 certified fans are designed to be safe in the dusty, damp, and hot conditions found in barns. **NOTE: Residential fans are a significant fire hazard when used in a barn.**

Other available ventilation options include: ceiling fans, pedestal fans, shutter fans, and more. All our ventilation products can be found at www.rammfence.com!

(SKU: 18BFB) 18" Basket Fans

- Certified for indoor and outdoor use
- Thermally-protected motor; spray down safe
- Totally enclosed direct drive motor with sealed ball bearings
- 3-speed, 8' chord / 25" pull chain
- Easy-to-install and hardware included



LED Lighting



LED lighting is the most energy-efficient option for your barn. RAMM barn lights are made in the USA and are entirely enclosed which seals out moisture, dust, and bugs. Choose from 4' or 8' fixtures which feature the unique "night light" option or our 35,000 lumen high bay arena lights.

What makes our LED lighting different?

RAMM barn lighting is UL-certified and produces daylight quality light with better distribution. They are cool-burning and power on instantly, even at temperatures as low as -20°F.

Mud Managment

(SKU: LHMM) Due to its unique flexibility, mud management is by far the easiest paddock base material to install. It prevents mud and erosion caused by hoof traffic and wet weather. Suitable for every farm, from high-end professional facilities to the modest home ranch.

It conforms to uneven or oddly shaped areas and to sub-base grades. This allows you to work with existing terrain or to crown or slope areas for better drainage, reducing the time and money spent on sub-grade preparation. This is one of the only mud management systems that can lay right over your existing muddy ground.



Mud management is easy to install. Just remember to compact your substrate first, then roll up your sleeves and install!

Stall Grid



(SKU: STALLGRID) Stall Grid flooring system is great for high-traffic areas such as horse walkers, paddock areas, round pens, vet facilities, and more! Stall Grid can lead to improvements in your horse's health with its shock absorbing technology, making it easy on their joints. It is suggested to have limestone screening for the base. The sediment you use only needs to be level with the top of the Stall Grid.

Drinking Post Waterer

(SKU: HWDP) The Drinking Post Waterer is the original, non-electric, frost-free automatic waterer. Field tested and proven for over 35 years, it will save you time, money, and will provide approx. 50°F water year-round.

Fresh, clean water is always available. This means better water consumption year-round. All your horse must do is press their nose to the paddle and the bowl fills with water. When finished, the unused water will drain.

The technology is simple - it works like a frost-free hydrant. The water supply line is buried beneath the frost line. When the paddle is depressed, a valve opens and the

water pressure in the line forces water into the bowl. After the horse is done, gravity drains the leftover water below the frost line. No electricity is needed!



Automatic Fly Spray System



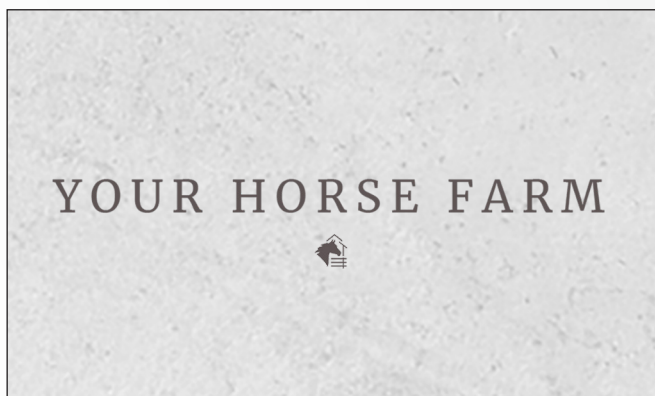
(SKU: AFSK) With our fly and mosquito control systems, flies, mosquitoes and many other insects are eliminated in 60 seconds or less. Additionally, the product interrupts the breeding cycle and insects can not develop an immunity to this formula. Our fly control systems use natural, safe, fly control products. The insecticides are biodegradable, environmentally safe (meets all requirements by the EPA), and are approved to be used around warm blooded animals and humans.

Check Us Out

ON OUR PODCAST



Welcome to **Late Night Riders**, an equestrian lifestyle podcast! Hangout with us as we discuss current and real-life trends with equestrian professionals. Join us every Friday night on Apple Podcast, Spotify, and watch exclusively on YouTube!



ON OUR BLOG

Love the equestrian lifestyle? Make sure you go check out our blog at **www.YourHorseFarm.com** for quick tips, guidance for your farm lifestyle, and to read stories from other fellow equestrians!

ON OUR WEBSITE

Make sure you head over to our website at **www.rammfence.com** to shop over 700+ products online, 24/7!



CALL: 800.853.1611 | FAX: 419.825.2433 | EMAIL: RAMM@RAMMFENCE.COM

Company Information



» Follow us @rammfence

Hours of Operation (in EST)

Office

Monday - Friday | 8:00a.m. - 6:00p.m.

Saturday | 9:00a.m. - 1:00p.m.

Sunday | Closed

Warehouse

Monday-Friday | 9:00a.m. - 5:30p.m.

Saturday | 9:00a.m. - 12:00p.m.

Sunday | Closed

Orders must be paid in full prior to shipment. MasterCard, VISA, Discover, Electronic Transactions, PayPal, cash & personal checks are all accepted forms of payment. Personal checks should be made payable to:

RAMM Fence Systems, Inc.

Return Policy

Returns within 14 days may receive a refund within reason. Any returns made after the 14 days will receive store credit only. No returns will be accepted after 30 days. A 20% restocking fee applies to all returns. Any returned product must be in new, salable condition. If returned product is not in these stated conditions, no refund will be issued. Certain items are not eligible for return, please see rammfence.com for a complete list of details.



How We Ship

Orders under 70lbs are shipped Priority Mail via USPS or UPS. Orders over 70lbs and oversized products are shipped common carrier freight. Customer is responsible for off-loading and signing for goods on arrival. Carefully check your order upon receipt, as damage can occur during shipping. All items are checked prior to shipment, any damaged or missing packages must be noted with USPS, UPS, or freight carrier at the time of delivery. Any shortages or inaccurate shipments must be reported to RAMM Horse Fencing & Stalls within 24 hours of delivery. **SHIPPING TIMES:** Most stock orders will ship within 3-5 business days. Please allow 6-8 weeks for custom stall orders.

UPS & Freight Delivery & Other

UPS and freight rates are calculated by weight and/or weight per package. We can calculate shipping costs as soon as your total order is complete. UPS can leave packages at your door without signature, however, freight customers MUST be present to accept the order and off-load. Please note: all shipments FOB Point-of-Origin, Swanton, OH. Refer to rammfence.com/resource-center/shipping-faqs for complete details. Some orders may need to be shipped via flatbed carrier instead of a common carrier freight. In this case, we will provide you with a flatbed delivery sheet that must be completed prior to the delivery of your order.

Limited Warranty

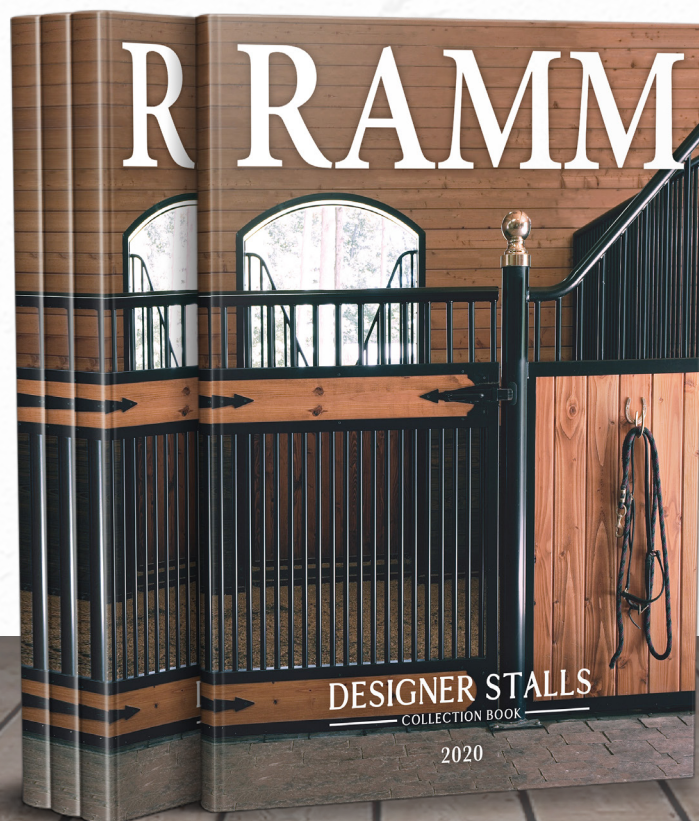
The duration of our limited manufacturer's warranties are displayed on the page that the product appears. Installation must comply with the manufacturer's specifications for warranty claims to be valid. Instructions are available online for each product, and our representatives will be on hand to answer any questions regarding installation. Please contact RAMM Horse Fencing & Stalls for all warranty claims.

Disclaimer

RAMM Horse Fencing & Stalls strives to ensure that all information in this catalog is correct and accurate. However, the information in the catalog has been gathered from many sources. As a result, RAMM Horse Fencing & Stalls cannot be held responsible for pricing or typographical errors. Photographs in this catalog are from new and previous product lines. RAMM Horse Fencing & Stalls also disclaims responsibility for use or misuse of any products described in this sales guide and any loss incurred through the use of any products according to the methods described herein. All products should be used according to the manufacturer's instructions. We have a constant product improvement plan in place and reserve the right to make changes and upgrades without notice. Prices subject to change without notice. This 2020/2021 catalog supersedes all previous publications by RAMM Horse Fencing & Stalls.



13150 Airport Highway
Swanton, Ohio 43558
Tel. 800.853.1611
Fax 419.825.2433
ramm@rammfence.com
www.rammfence.com



***LOOKING FOR SOMETHING NEW & UNIQUE?
CALL 800.853.1611 & REQUEST OUR
DESIGNER STALLS COLLECTION BOOK!***



COVER: STONE WALL SURPRISE & STELLA RUMANES
PHOTO COURTESY OF MATT SEIFNIA TAKEN AT
LIBERTY LANE FARMS, A PRIVATE FARM IN CALIFORNIA

SCAN WITH YOUR
MOBILE DEVICE'S QR READER
TO VISIT WWW.RAMMFENCE.COM.



V2K-20