

Interlocking Rubber Pavers

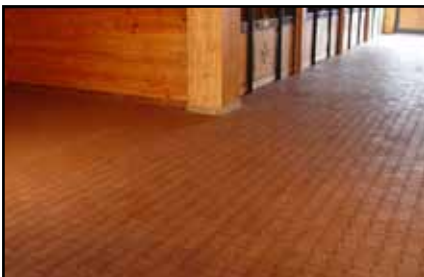
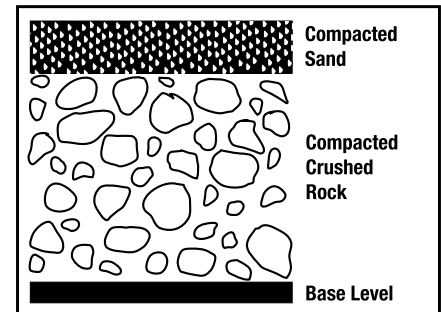
Installation and Maintenance Guide

RAMM rubber paver bricks are manufactured in a 73/4" dog bone shape that will interlock with adjacent pavers when installed. A firm sub-base is critical for proper installation. Excavate approximately 12" of soil below the required finish level of the paver floor. Replace the excavated soil with about 9" of a compacted crush stone base in order to provide drainage for permeable applications. Dampened leveling sand may also be added before laying the rubber paver bricks. This will allow moisture to penetrate surface joints and drain through the crushed stone base. Solid sub-bases such as concrete will require a perforated drain to prevent moisture build-up. Once the sub-floor has been prepped you will use either string lines or chalk lines to ensure straight lines in the proper directions. RAMM rubber paver bricks does

not require a curbing or some sort of frame work in order to hold the entire floor in place. The RAMM rubber paver bricks are installed adjacent to one another. It is best to start in the middle of the floor and work your way towards the outside edge in progressive rows. The end pavers will need to be cut to fit tightly along curbing or frame work. Trimming the pavers can be done with a chop saw or similar type of electric saw. As you progress forward with your rows, you will want to stop from time to time and check to make sure you are staying square with your guide string or chalk lines. This is also a good time to tighten the floor. This is done by placing a 2x4 along the edge of the pavers and "knocking back" the rows. This should be done every 3 to 5 rows. For more information on RAMM rubber pavers bricks please contact one of our solution experts.

Installation Tip

- Prepare a proper base by following manufacturer's instructions



 **RAMM**
Horse Fencing & Stalls

1.800.872.8917

www.rammfence.com