

# VTODVTON

## ISON™ VAPORTIGHT HIGH BAY SERIES



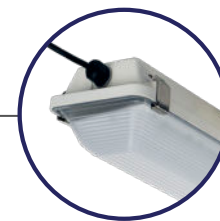
HIGH EFFICACY • HIGH EFFICACY • HIGH EFFICACY •  
**167  
LPW**

- 1 3X LIFE\***  
VTON2 calculated L70 rating of 229,000 hours is a minimum of 4x as long as the typical Economy Vapor Tight Fixture alternative. VTOD2 calculated L70 rating of 174,000 hours is a minimum of 3x as long as the Economy Vapor Tight Fixture alternative.

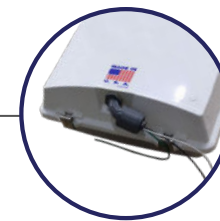
- 2 CONFIGURABLE POWER CONNECTIONS**  
Hardwire, whip, or liquid-tight power connections available. Configured per order.



Hardwire



Whip



Hardwire with Liquid-Tight Conduit Elbow



- 3 DUST PROOF, WATERTIGHT, RUGGED FIXTURE BODY**  
Durable and versatile fixture suitable for demanding environments with frosted impact resistant, shallow, or linear ribbed frosted lens. 316 Marine Grade latches. Lightweight, white, IP67, IP69, and UL 5VA (f1) reinforced fiberglass body. Two fixture sizes available in VTOD2 models: 2' x 2' and 2' x 4'. Two fixture sizes available in VTON2 models: 1' x 4' and 1' x 8'.

- 4 NSF/ANSI STANDARD 2 SPLASH ZONE CERTIFIED**



VTOD2

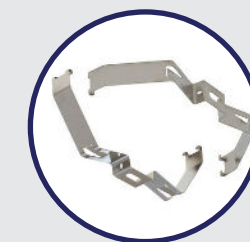


VTON2

- 6 HIGH PERFORMANCE COMPONENTS**  
Engineered with efficient and durable electronic components from the industry's most trusted brands. Standard 6kV/3kA surge protection. Up to 167 Lumens Per Watt.

- 5 MULTIPLE FIXTURE OPTIONS**
- 10w and 20w Battery Back Up
  - 20kV/10kA Surge Protection Option
  - Minimum operational temperature as low as -35°C

**CONTROLS & ACCESSORIES**  
Factory and field installed options available.



Flush Mount



Hanging Bracket CT4

VTOD2 available in lumen packages from 13,000 to 18,000 lumens in 2' and 21,000 to 38,000 lumens in 4'. 120v-277v, 347v, 480v  
VTON2 available in lumen packages from 3,000 to 14,000 lumens in 4' and 9,000 to 20,000 lumens in 8'. 120v-277v, 347v, 480v  
\*LED rated life based on VTON2815LUNVFD840LAFGSS L70 @ 25C ambient vs. Economy Vapor Tight Fixture.  
\*LED rated life based on VTOD2424LUNVFD840LAFGSS L70 @ 25C ambient vs. Economy Vapor Tight Fixture.

